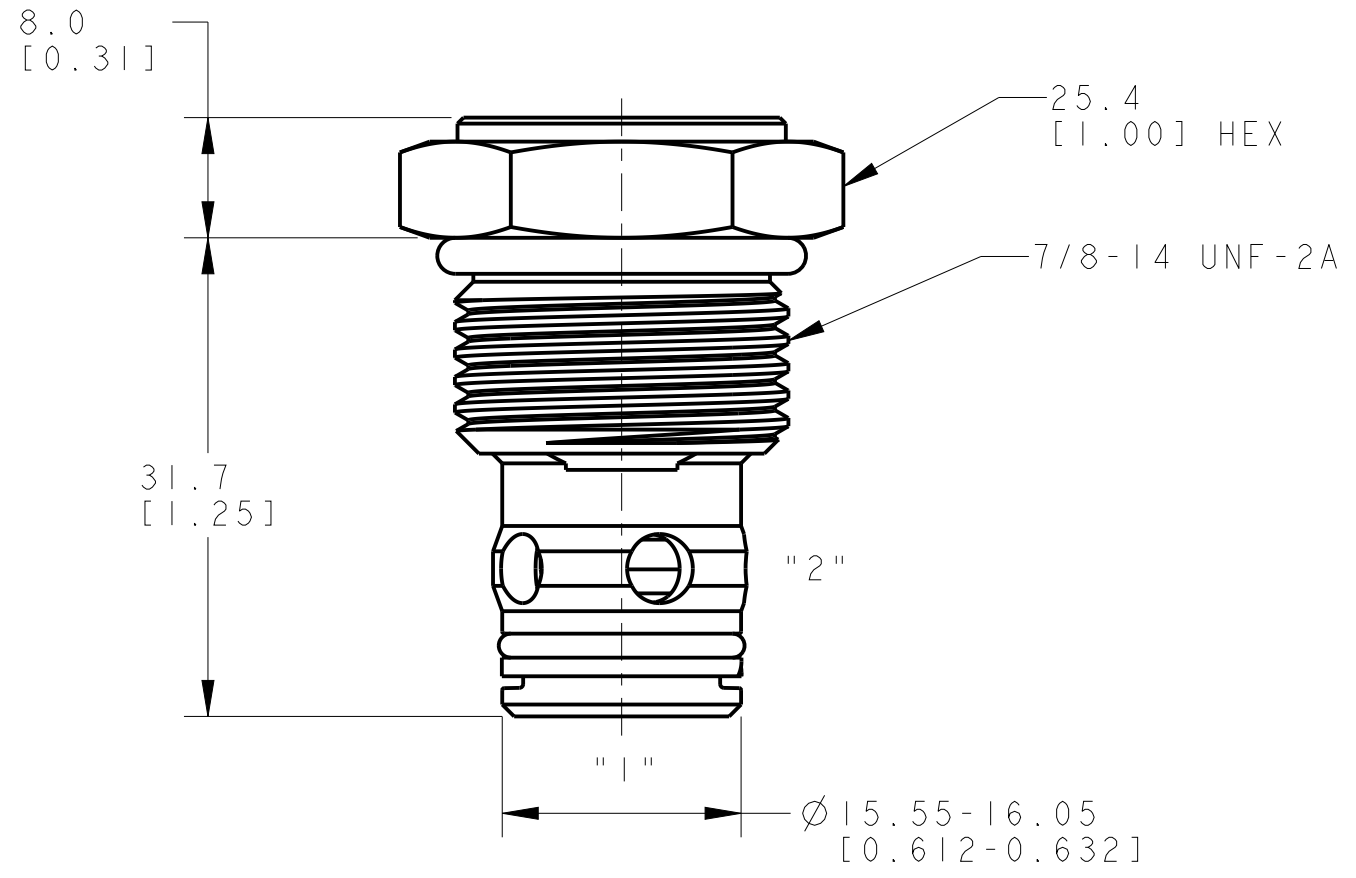


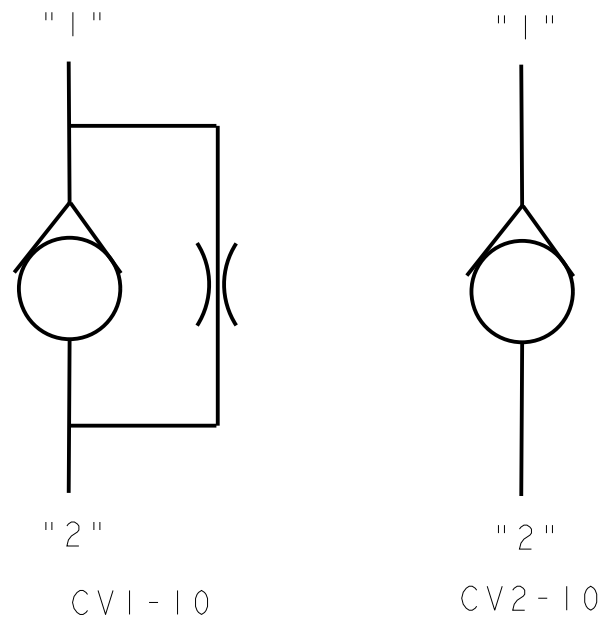
REV	DESCRIPTION	BY	CHK	DATE	ECN / MPS
A	ENGINEERING RELEASE	JGS	AH	2/12/05	M63978
B	ADDED CV2-10	SSS	YKP	05/16/16	M100523



NOTE:

1. USE VALVE CAVITY C-10-2
2. APPLICATION PRESSURE : 3000 PSI
3. FLOW RATE :
CV1-10 : 12 GPM
CV2-10 : 20 GPM
4. NET WEIGHT: .08 Kg [.17 lb]
5. TORQUE INTO CAVITY:
ALUMINUM CAVITY: 47-54 N·m [35-40 lbf·ft]
STEEL CAVITY: 68-75 N·m [50-55 lbf·ft]

SCHEMATIC SYMBOL



REVIEWED FOR CLASSIFICATION PER ESP-042

UNLESS OTHERWISE SPECIFIED ALL DIMENSIONS ARE IN INCHES <input checked="" type="checkbox"/> MILLIMETERS (INCHES) <input type="checkbox"/>	DRAWING BASED ON ASME Y14.5-2009	
	THE REPRODUCTION, DISTRIBUTION, AND UTILIZATION OF THIS DOCUMENT, AS WELL AS THE COMMUNICATION OF ITS CONTENTS TO OTHERS WITHOUT EXPLICIT AUTHORIZATION IS PROHIBITED. OFFENDERS WILL BE HELD LIABLE FOR THE PAYMENT OF DAMAGES. ALL RIGHTS RESERVED IN THE EVENT OF THE GRANT OF A PATENT, UTILITY MODEL, OR DESIGN. (PER ISO 16016)	
TOLERANCES .X ± -- .XX ± -- .XXX ± --- ∠ ± --	DRAWN JGS BY/DATE 9/30/04	MATERIAL/HEAT TREAT \
UNSPECIFIED RADII ARE: ----	CHECKED JGS BY/DATE 9/30/04	TITLE CHECK VALVE
UNSPECIFIED DRAFT ANGLES ARE: -----°	ENGRG NF BY/DATE 10/1/04	NUMBER A-2591-003
B SIZE	METALLURGY BY/DATE \	SCALE 1/1
	THIRD ANGLE PROJECTION DO NOT SCALE	SHEET 1 OF 1
	MICROINCHES <input checked="" type="checkbox"/> MICROMETERS (MICROINCHES) <input type="checkbox"/> ARITHMETICAL AVERAGE <input checked="" type="checkbox"/>	

