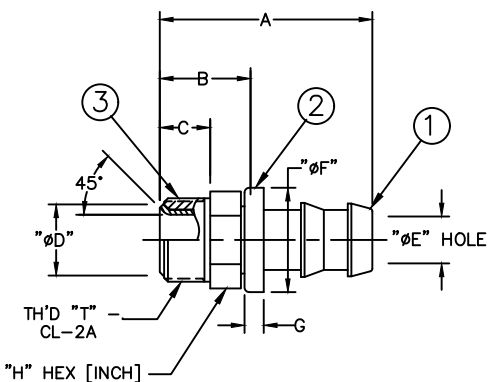


WEATHERHEAD PART NUMBER	AEROQUIP PART NUMBER	TH'D T <sup>h</sup>	A REF	B REF	C REF	D	E REF	F ±0.25 [±.010]	G REF	H [INCH] REF
10004B-B03	4740-3-4B	3/8-24	38.9 [1.53]	19.8 [.78]	9.1 [.36]	6.2±0.12 [.244±.005]	2.8 [.11]	17.5 [.689]	4.3 [.17]	3/8
10004B-B04	4740-4B	7/16-24	39.4 [1.55]	20.3 [.80]	9.1 [.36]	8.13±0.12 [.320±.005]	4.3 [.17]	17.5 [.689]	4.3 [.17]	7/16
10004B-B05	4740-5-4B	1/2-20	40.9 [1.61]	21.6 [.85]	10.2 [.40]	10.06±0.2 [.396±.008]	4.3 [.17]	17.5 [.689]	4.3 [.17]	1/2
10005B-B04	4740-4-5B	7/16-24	50.5 [1.99]	30 [1.18]	9.1 [.36]	8.13±0.12 [.320±.005]	4.6 [.18]	18.5 [.730]	4.3 [.17]	7/16
10005B-B05	4740-5B	1/2-20	51.3 [2.02]	30.7 [1.21]	10.2 [.40]	10.06±0.2 [.396±.008]	6.1 [.24]	18.5 [.730]	4.3 [.17]	1/2
10005B-B06	4740-6-5B	5/8-18	44.4 [1.75]	22.4 [.88]	10.2 [.40]	12.17±0.2 [.479±.008]	6.1 [.24]	18.5 [.730]	4.3 [.17]	5/8
10006B-B05	4740-5-6B	1/2-20	44.2 [1.74]	23.6 [.93]	10.2 [.40]	10.06±0.2 [.396±.008]	5.8 [.23]	22 [.866]	4.3 [.17]	1/2
10006B-B06	4740-6B	5/8-18	44.4 [1.75]	22.6 [.89]	10.2 [.40]	12.17±0.2 [.479±.008]	7.6 [.30]	22 [.866]	4.3 [.17]	5/8
10008B-B08	4740-8B	3/4-18	50.5 [1.99]	24.6 [.97]	11.7 [.46]	15.62±0.2 [.615±.008]	9.9 [.39]	24.9 [.980]	4.3 [.17]	3/4
10010B-B10	4740-10B	7/8-18	65.5 [2.58]	26.4 [1.04]	12.2 [.48]	18.8±0.2 [.740±.008]	12.2 [.48]	29.4 [1.156]	4.3 [.17]	7/8

REVISIONS			
REV	DESCRIPTION	DATE	APPROVED
G	REDRAWN & REDESIGNED. UPDATED TO DANFOSS FORMAT & DIMENSION STYLE. 1) ADDED WEATHERHEAD PART NUMBERS.	2014-06-11 ARP/VSP	0098192-ECO

METRIC



- 2. NUT MUST SWIVEL.
- 1. DIMENSIONS ARE IN MILLIMETERS [INCHES].

10010B-B10	4740-10B	FW1924-1010B	FF91126-10	1299-10B	
10008B-B08	4740-8B	FW1924-0808B	FF91126-8	100X8	
10006B-B06	4740-6B	FW1924-0606B	FF91126-6	100X6	
10006B-B05	4740-5-6B	FW1924-0506B	FF91126-6	100X5	
10005B-B06	4740-6-5B	FW1924-0605B	FF91126-5	100X6	
10005B-B05	4740-5B	FW1924-0505B	FF91126-5	100X5	
10005B-B04	4740-4-5B	FW1924-0405B	FF91126-5	100X4	
10004B-B05	4740-5-4B	FW1924-0504B	FF91126-4	100X5	
10004B-B04	4740-4B	FW1924-0404B	FF91126-4	100X4	
10004B-B03	4740-3-4B	FW1924-0304B	FF91126-4	100X3	
WEATHERHEAD PART NUMBER	AEROQUIP PART NUMBER	① NIPPLE	② HOSE CAP	③ NUT	

LIST OF MATERIALS					
ITEM NO.	MATERIAL	DRAWN	CHECKED	APPROVED	RELEASE DATE
1	BRASS	A. PATIL	V. PATIL	Y. KULKARNI	2014-06-11
2	SANTOPRENE-BLUE				
3	BRASS				

DRAWN		FLUID CONVEYANCE DIVISION	
A. PATIL		DRAWING TITLE	
CHECKED		FITTING ASSEMBLY	
V. PATIL		SAE MALE INVERTED FLARE	
APPROVED		SOCKETLESS TYPE, 2556 HOSE	
Y. KULKARNI		SIZE	DRAWING NUMBER
RELEASE DATE		A2	4740-B
2014-06-11		SCALE	REV
0098192-ECO		NONE	G
THIRD ANGLE PROJECTION	SCALE	DIST	SHEET
☉	NONE	U	1
CAGE CODE		01276	

THE REPRODUCTION, DISTRIBUTION AND UTILIZATION OF THIS DOCUMENT AS WELL AS THE COMMUNICATION OF ITS CONTENTS TO OTHERS WITHOUT EXPLICIT AUTHORIZATION IS PROHIBITED. OFFENDERS WILL BE HELD LIABLE FOR THE PAYMENT OF DAMAGES. ALL RIGHT RESERVED IN THE EVENT OF THE GRANT OF A PATENT, UTILITY MODEL OR DESIGN. (PER ISO 16016)