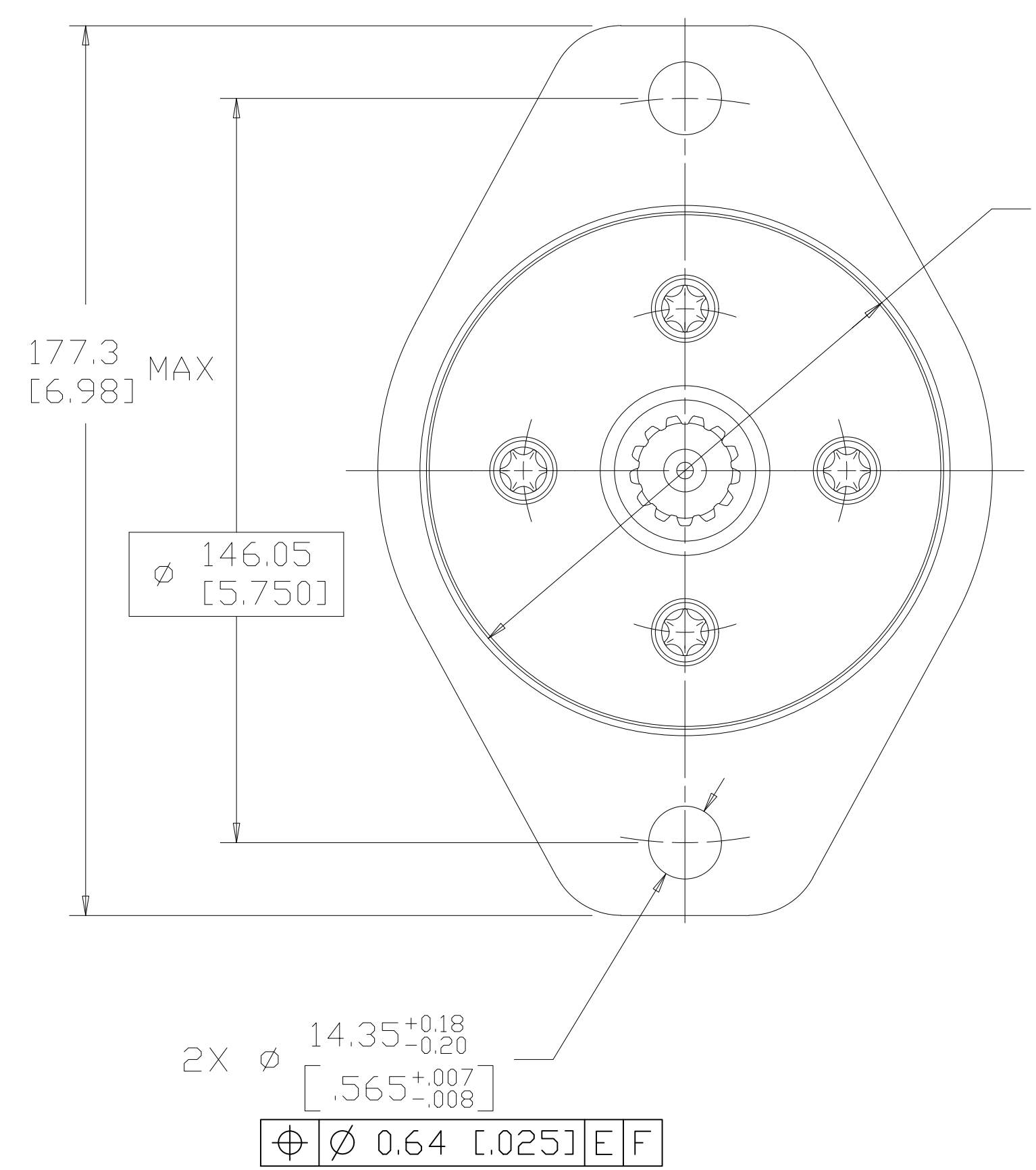


DISPLACEMENT CODE	G MAX
022	129.4 [5.09]
025	130.2 [5.13]
028	129.4 [5.09]
035	133.2 [5.24]
045	133.2 [5.24]
059	136.2 [5.36]
073	139.5 [5.49]
089	143.1 [5.63]
097	144.9 [5.71]
113	148.4 [5.84]
141	154.8 [6.09]
179	163.4 [6.43]
226	173.8 [6.84]
451	224.7 [8.85]

SYM	REVISION	BY	DATE	ECN
A	ENGINEERING RELEASE	GSL	6-2-89	M3977
B	-1>(2C>3.25/82,6 MAX WAS 3.21/81,6 MAX -2>(4B) ADDED 3.36/85,4 MAX -3>(3C>REMOVED 3.31/84,1 φ MAX	DPR	12-13-89	18329
C	-1>(2C> 3.21/81,6 WAS 3.25/82,6 -2>(4B) 3.31/84,1 WAS 3.36/85,4	LK	10-9-90	19520
D	-1>REVISED G MAX TAB -2>REVISED PICTORIALLY	AGJ	8-27-92	22674
E	-1>(8C>WAS 6.97/177,1 MAX -2>(1B>WAS 4.81/122,2 MAX	SJP	04-07-04	46856
F	-1>REVISED PICTORIALLY -2>(4D>UPDATED TABULATION FOR G MAX -3>REVISED NOTE AS PER ESP-022-69	AAB	02-17-14	0054755
G	(1C>ADDED EATON LOGO TO END CAP	AAB	01-22-15	0061684
H	NOTE 5 WAS CASE DRAIN: 0 = NO CASE DRAIN	ABH	07-27-15	0065202



101.55^{+0.05}_{-0.08}
3.998^{+0.002}_{-0.003}
-E-

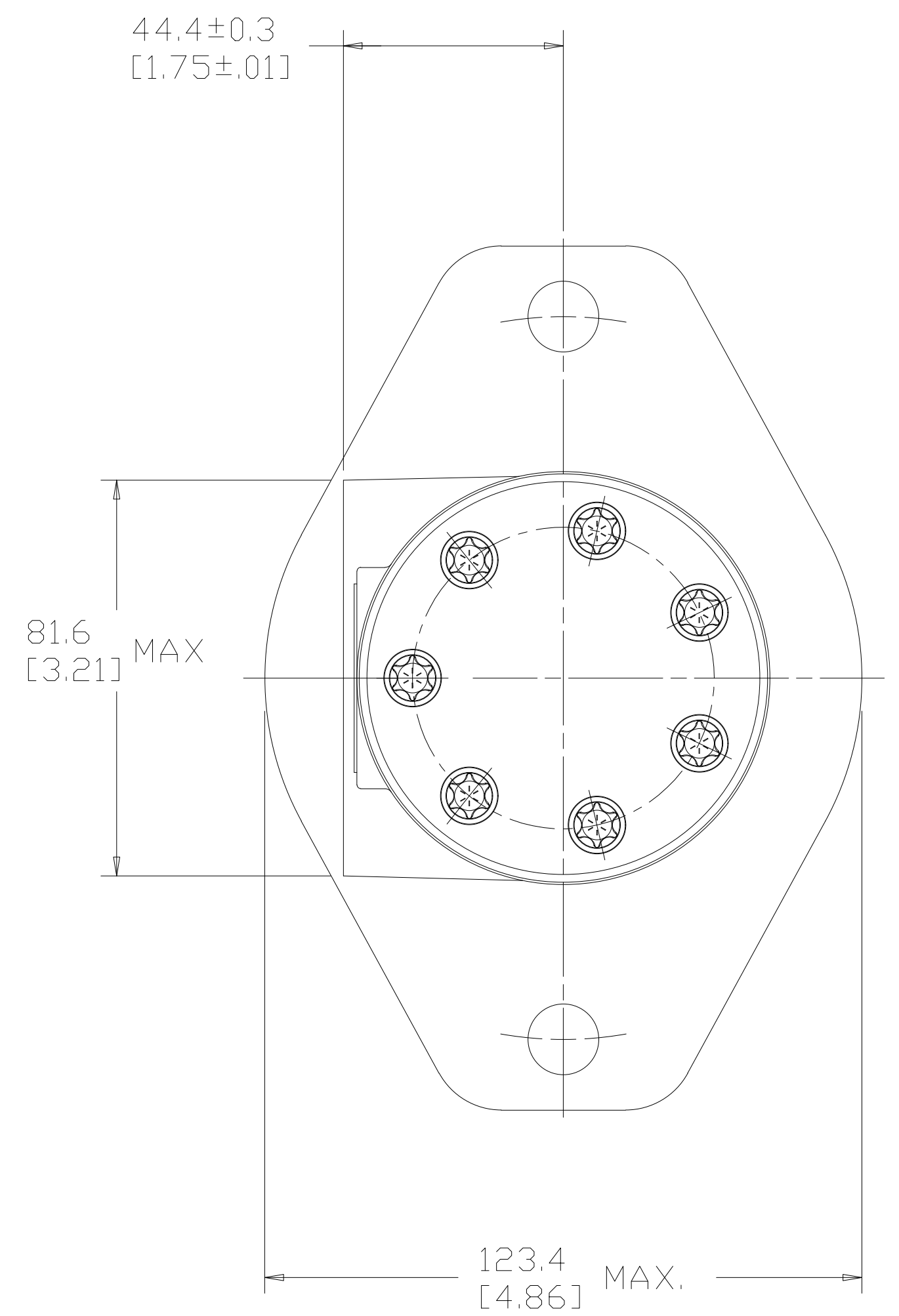
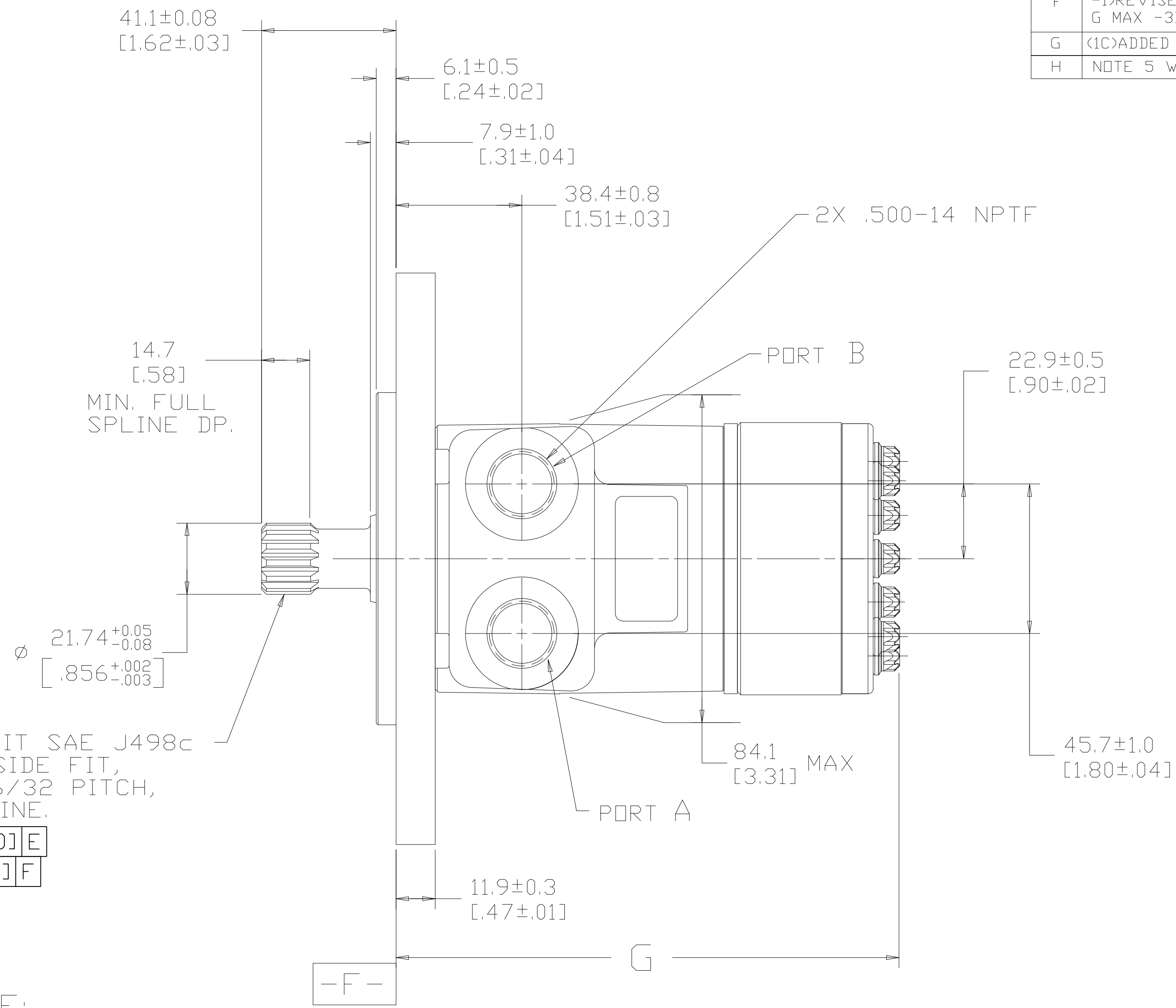
SPLINE TO FIT SAE J498c
FLAT ROOT SIDE FIT,
13 TOOTH, 16/32 PITCH,
30° P/A SPLINE.

⊙ 0.26 [0.010] E
⊥ 0.08 [0.003] F

NOTE:

- ROTATION:
STANDARD; WHEN FACING SHAFT END OF MOTOR, SHAFT TO ROTATE CLOCKWISE WHEN PORT "A" IS PRESSURIZED. COUNTERCLOCKWISE WHEN PORT "B" IS PRESSURIZED.

REVERSE ; WHEN FACING SHAFT END OF MOTOR, SHAFT TO ROTATE CLOCKWISE WHEN PORT "B" IS PRESSURIZED. COUNTERCLOCKWISE WHEN PORT "A" IS PRESSURIZED.
- MOUNTING FLANGE:
DD = 2 BOLT STD: Ø101.60 [4.000] X 6.10 [.240] PILOT, Ø14.35 [.565] MOUNTING HOLES ON Ø146.05 [5.750] B.C. (SAE B)
- OUTPUT SHAFT:
16 = 22.22 [.875] DIA. SAE 13 TOOTH SPLINE (SAE B)
- PORT TYPE:
AB = .500-14 NPTF DRYSEAL PIPE THREAD PORTS
- CASE DRAIN:
00 = NO CASE DRAIN



UNLESS OTHERWISE SPECIFIED ALL DIMENSIONS ARE IN INCHES
MILLIMETERS (INCHES)

UNSPECIFIED TOLERANCES ARE:
XX ± ----
XXX ± ----
≤ ± ----

UNSPECIFIED RADIUS ARE:

UNSPECIFIED DRAFT ANGLES ARE:

D SIZE

REVIEWED FOR CLASSIFICATION PER ESP-042

DRAWING BASED ON ANSI Y14.5M-1982

THE REPRODUCTION, DISTRIBUTION AND UTILIZATION OF THIS DOCUMENT AS WELL AS THE COMMUNICATION OF ITS CONTENTS TO OTHER WITHOUT EXPLICIT AUTHORIZATION IS PROHIBITED. OFFENDERS WILL BE HELD LIABLE FOR THE PAYMENT OF DAMAGES. ALL RIGHT RESERVED IN THE EVENT OF THE GRANT OF A PATENT, UTILITY MODEL OR DESIGN. (PER ISO 16016)

Danfoss

DRAWN BY/DATE: GSL 6-26-89
CHECKED BY/DATE: KD 6-26-89
ENGR BY/DATE: WCW 6-26-89
METALLURGY BY/DATE: ----

MATERIAL/HEAT TREAT: ----
TITLE: H MOTOR INSTALLATION

NUMBER: A-37-335
SCALE: 1/1 SHEET 1 OF 1