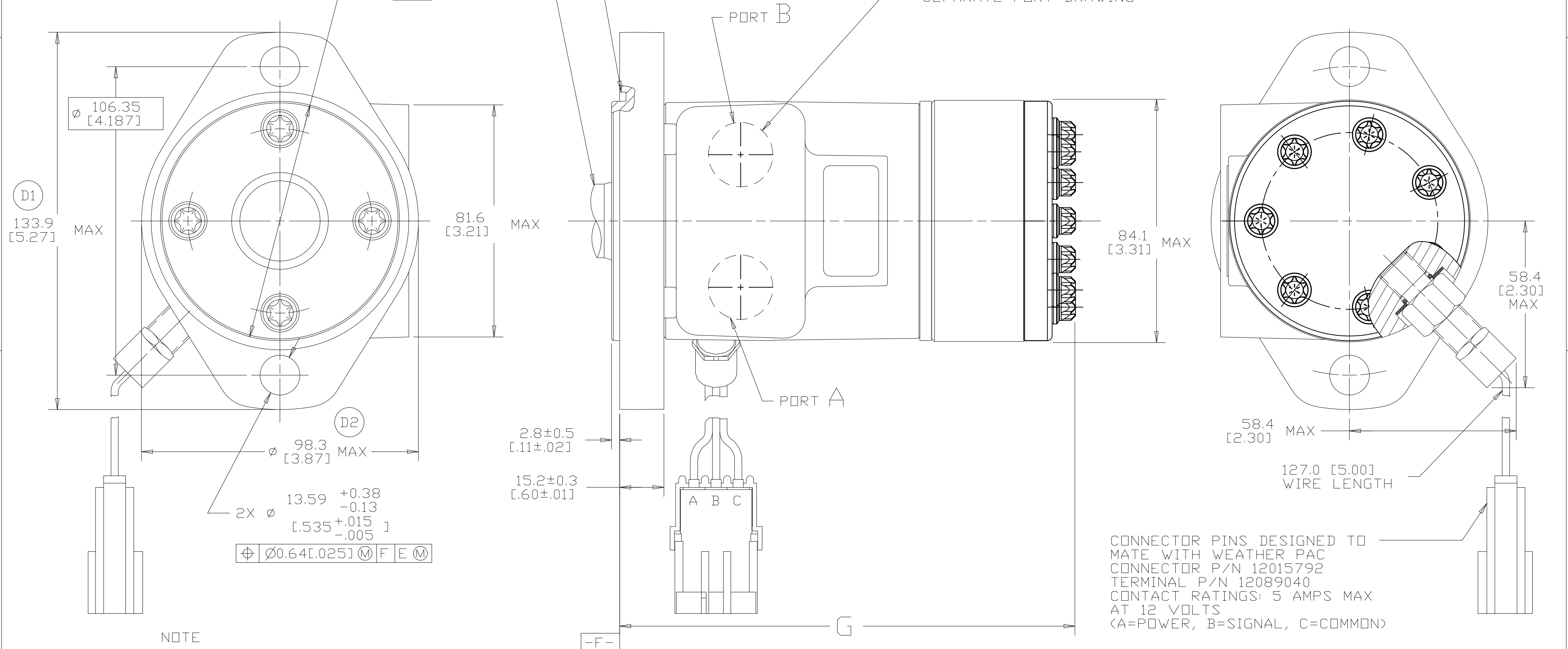


DISPLACEMENT CODE	G MAX	DISPLACEMENT CODE	G MAX
022	132.7 [5.22]	141	158.1 [6.22]
025	133.5 [5.26]	179	166.7 [6.56]
028	132.7 [5.22]	226	177.1 [6.97]
035	136.5 [5.37]	451	228.0 [8.98]
045	136.5 [5.37]		
059	139.5 [5.49]		
073	142.8 [5.62]		
089	146.4 [5.76]		
097	148.2 [5.84]		
113	151.7 [5.97]		

REV	DESCRIPTION	BY	CHK	DATE	ECN
A	ENGINEERING RELEASE	RAF		6-14-95	M13695
B	ADDED SENSOR DIMENSIONS	MGF		11-11/97	30385
C	(4B)Ø13.59+0.38/-0.13 [5.35+0.015/-0.005] WAS Ø13.59±0.13 [5.35±0.005]	AGJ		1-28-02	39853
D	-1)X(4C)WAS 131.4/[5.17] MAX -2)X(4B)WAS Ø96.8/[3.81]MAX	SJP		04-07-04	46856
E	-1)REVISED PICTORIALY -2)X(4D)UPDATED TABULATION FOR G MAX -3)REVISED NOTE AS PER ESP-022-69	AAB		02-17-14	0054755
F	(1C)ADDED EATON LOGO TO END CAP	AAB		01-22-15	0061684
G	NOTE 3 WAS CASE DRAIN: 0 = NO CASE...	ABH		07-27-15	0065202



NOTE

- 1 ROTATION: STANDARD: WHEN FACING SHAFT END OF MOTOR, SHAFT TO ROTATE CLOCKWISE WHEN PORT "A" IS PRESSURIZED COUNTERCLOCKWISE WHEN PORT "B" IS PRESSURIZED  
REVERSE: WHEN FACING SHAFT END OF MOTOR, SHAFT TO ROTATE CLOCKWISE WHEN PORT "B" IS PRESSURIZED COUNTERCLOCKWISE WHEN PORT "A" IS PRESSURIZED
- 2 MOUNTING FLANGE: AA = 2 BOLT STD: Ø82.50 [3.248] X 3.05 [.120] PILOT Ø13.59 [5.35] MOUNTING HOLES ON Ø106.35 [4.187] BOLT CIRCLE
- 3 CASE DRAIN: 00 = NO CASE DRAIN
- 4 SENSOR OUTPUT WILL BE 15 ELECTRICAL PULSES PER SHAFT REVOLUTION.  
SUPPLY VOLTAGE: 8 TO 28 Vdc  
OUTPUT VOLTAGE: LOW .5 Vdc AT 10 mA; HIGH Vs-1 Vdc



REVIEWED FOR CLASSIFICATION PER ESP-042

UNLESS OTHERWISE SPECIFIED ALL DIMENSIONS ARE IN INCHES <input type="checkbox"/> MILLIMETERS <input checked="" type="checkbox"/>	DRAWING BASED ON ANSI Y14.5M-1982	
	THE REPRODUCTION, DISTRIBUTION AND UTILIZATION OF THIS DOCUMENT AS WELL AS THE COMMUNICATION OF ITS CONTENTS TO OTHER WITHOUT EXPLICIT AUTHORIZATION IS PROHIBITED. OFFENDERS WILL BE HELD LIABLE FOR THE PAYMENT OF DAMAGES. ALL RIGHT RESERVED IN THE EVENT OF THE GRANT OF A PATENT, UTILITY MODEL OR DESIGN. (PER ISO 16016)	
TOLERANCES x ± ---- .xx ± REF .xxx ± ONLY < ± ----	DRAWN BY/DATE RAF 6-16-95 CHECKED BY/DATE AGJ 6-23-95 ENGRG BY/DATE MLB 6-23-95 METALLURGY BY/DATE ----	MATERIAL/HEAT TREAT
UNSPECIFIED RADII ARE ---- UNSPECIFIED DRAFT ANGLES ARE ----	THIRD ANGLE PROJECTION	TITLE H MOTOR INSTALLATION
DRAWING FORMAT CADD <input checked="" type="checkbox"/> MANUAL <input type="checkbox"/>	DO NOT SCALE	MICROINCHES <input type="checkbox"/> MILLIMETERS <input type="checkbox"/> ARITHMETICAL AVERAGE <input checked="" type="checkbox"/>
		NUMBER A-37-367 SCALE 1/1 SHEET 1 OF 1

