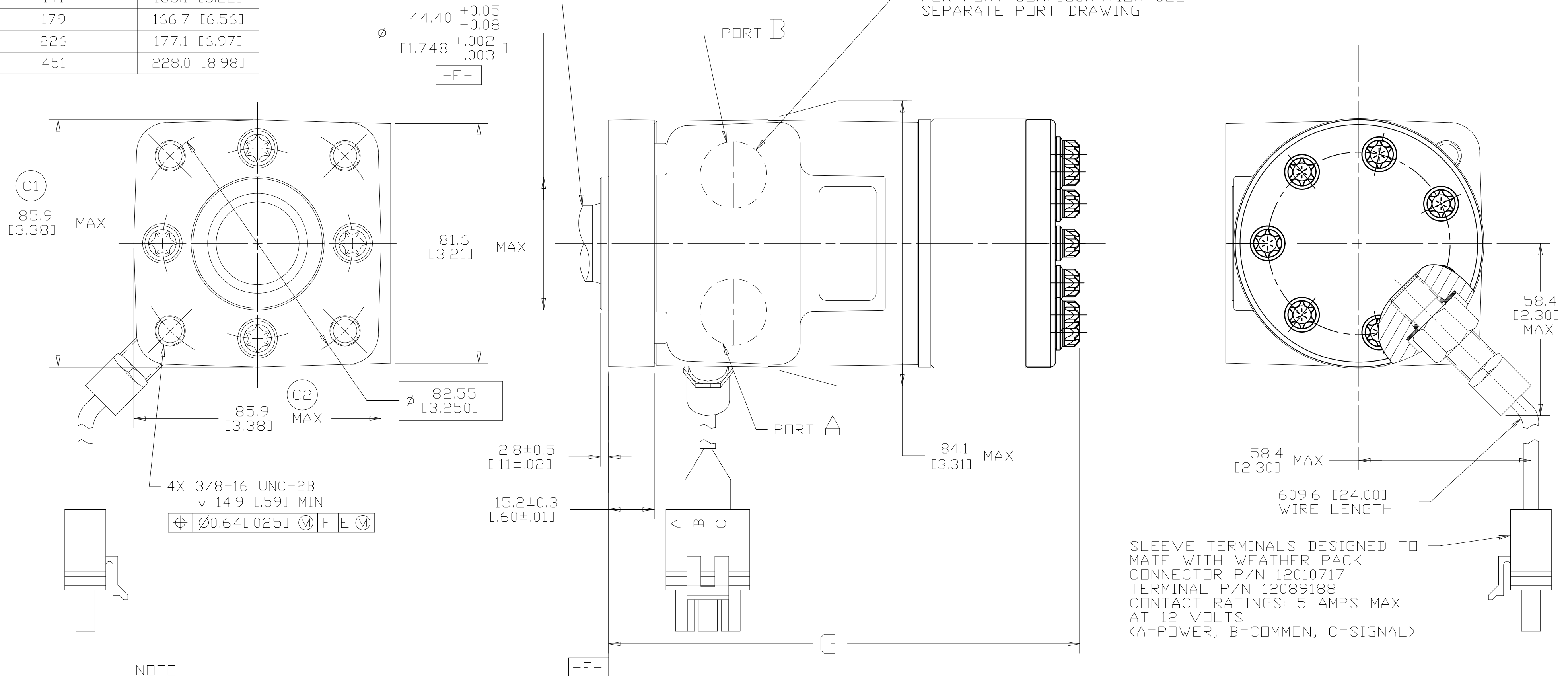


DISPLACEMENT CODE	G MAX
022	132.7 [5.22]
025	133.5 [5.26]
028	132.7 [5.22]
035	136.5 [5.37]
045	136.5 [5.37]
059	139.5 [5.49]
073	142.8 [5.62]
089	146.4 [5.76]
097	148.2 [5.84]
113	151.7 [5.97]
141	158.1 [6.22]
179	166.7 [6.56]
226	177.1 [6.97]
451	228.0 [8.98]

REV	DESCRIPTION	BY	CHK	DATE	ECN
A	ENGINEERING RELEASE	RAF		6-14-95	M13695
B	ADDED SENSOR DIMENSIONS	MGF		11-11/97	30385
C	-1>(4C>WAS 83.4/[3.28] MAX -2>(4B>WAS 83.4/[3.28] MAX	SJP		04-07-04	46856
D	-1>REVISED PICTORIALY -2>(4D>UPDATED TABULATION FOR G MAX -3>REVISED NOTE AS PER ESP-022-69	AAB		02-17-14	0054755
E	(1C>ADDED EATON LOGO TO END CAP	AAB		01-22-15	0061684
F	NOTE 3 WAS CASE DRAIN: 0 = NO CASE...	ABH		07-27-15	0065202

FOR SHAFT CONFIGURATION SEE SEPARATE SHAFT DRAWING

FOR PORT CONFIGURATION SEE SEPARATE PORT DRAWING



NOTE

- ROTATION: STANDARD: WHEN FACING SHAFT END OF MOTOR, SHAFT TO ROTATE CLOCKWISE WHEN PORT "A" IS PRESSURIZED COUNTERCLOCKWISE WHEN PORT "B" IS PRESSURIZED
REVERSE: WHEN FACING SHAFT END OF MOTOR, SHAFT TO ROTATE CLOCKWISE WHEN PORT "B" IS PRESSURIZED COUNTERCLOCKWISE WHEN PORT "A" IS PRESSURIZED
- MOUNTING FLANGE: BA = 4 BOLT STD: $\phi 44.40$ [1.748] X 3.05 [0.120] PILOT 3/8-16 MOUNTING HOLES ON $\phi 82.55$ [3.250] BOLT CIRCLE
- CASE DRAIN: 00 = NO CASE DRAIN
- SENSOR OUTPUT WILL BE 15 ELECTRICAL PULSES PER SHAFT REVOLUTION.
SUPPLY VOLTAGE: 8 TO 28 Vdc
OUTPUT VOLTAGE: LOW .5 Vdc AT 10 mA; HIGH Vs-1 Vdc



REVIEWED FOR CLASSIFICATION PER ESP-042

UNLESS OTHERWISE SPECIFIED ALL DIMENSIONS ARE IN INCHES <input type="checkbox"/> MILLIMETERS (INCHES) <input checked="" type="checkbox"/>	DRAWING BASED ON ANSI Y14.5M-1982	
	THE REPRODUCTION, DISTRIBUTION AND UTILIZATION OF THIS DOCUMENT AS WELL AS THE COMMUNICATION OF ITS CONTENTS TO OTHER WITHOUT EXPLICIT AUTHORIZATION IS PROHIBITED. OFFENDERS WILL BE HELD LIABLE FOR THE PAYMENT OF DAMAGES. ALL RIGHT RESERVED IN THE EVENT OF THE GRANT OF A PATENT, UTILITY MODEL OR DESIGN. (PER ISO 16016)	
TOLERANCES x ± ---- .xx ± REF .xxx ± ONLY < ± ----	DRAWN BY/DATE RAF 6-16-95 CHECKED BY/DATE AGJ 6-23-95 ENGRG BY/DATE MLB 6-23-95 METALLURGY BY/DATE	MATERIAL/HEAT TREAT
UNSPECIFIED RADII ARE ----	UNSPECIFIED DRAFT ANGLES ARE ----	TITLE H MOTOR INSTALLATION
DRAWING FORMAT CADD <input checked="" type="checkbox"/> MANUAL <input type="checkbox"/>	THIRD ANGLE PROJECTION	MICROINCHES <input type="checkbox"/> MICROMETERS (MICROINCHES) <input type="checkbox"/> ARITHMETICAL AVERAGE <input checked="" type="checkbox"/>
	DO NOT SCALE	NUMBER A-37-368 SCALE 1/1 SHEET 1 OF 1

