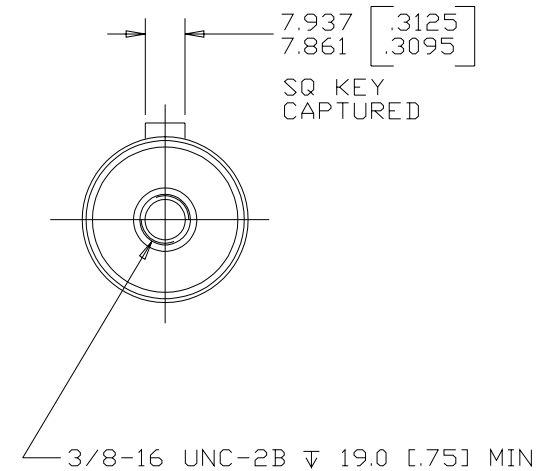
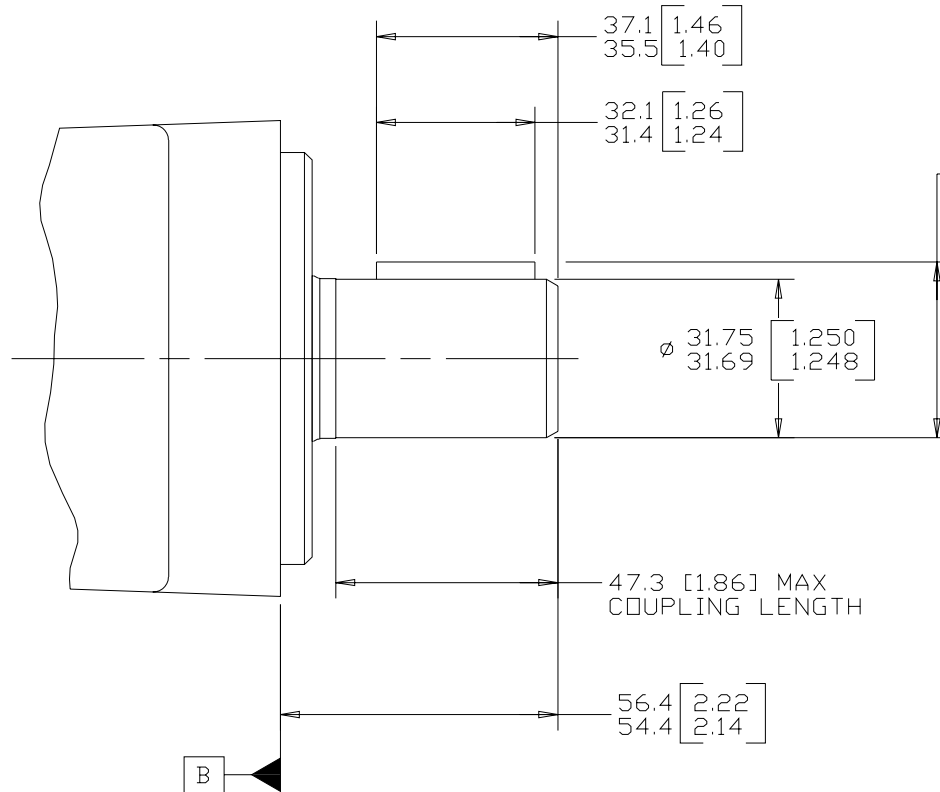


REV	DESCRIPTION	BY	DATE	ECN
A	ENGINEERING RELEASE	MGF	7-5-00	M23809
B	NOTE 1 WAS MOUNTING TYPE: OPTION C	AGJ	5-13-02	41044
C	56.4/54.4 [2.22/2.14] WAS 56.6/54.4 [2.23/2.14]	AGJ	5-17-04	47918
D	NOTE 2 WAS OUTPUT SHAFT: OPTION 85	PM	4-4-06	54522
E	-1>7.937/7.861 [.3125/.3095] WAS 7.963/7.937 [.3135/.3125] -2>DRAWING UPDATED TO ASME Y14.5M-1994 STANDARD	YUP	11-11-11	0035055



NOTE

- 1 MOUNTING TYPE: OPTION AC, BA & BE
- 2 OUTPUT SHAFT: OPTION 36

C S REVIEWED FOR CLASSIFICATION PER ESP-042

UNLESS OTHERWISE SPECIFIED ALL DIMENSIONS ARE IN INCHES <input type="checkbox"/> MILLIMETERS (INCHES) <input checked="" type="checkbox"/>		DRAWING BASED ON ASME Y14.5M-1994	
TOLERANCES x ± ---- xx ± REF xxx ± ONLY ∠ ± ----		THE REPRODUCTION, DISTRIBUTION, AND UTILIZATION OF THIS DOCUMENT, AS WELL AS THE COMMUNICATION OF ITS CONTENTS TO OTHERS WITHOUT EXPLICIT AUTHORIZATION IS PROHIBITED. OFFENDERS WILL BE HELD LIABLE FOR THE PAYMENT OF DAMAGES. ALL RIGHTS RESERVED IN THE EVENT OF THE GRANT OF A PATENT, UTILITY MODEL, OR DESIGN. (PER ISO 16016)	
UNSPECIFIED RADII ARE ----		DRAWN BY/DATE MGF 7-25-00 CHECKED BY/DATE AGJ 7-28-00 ENGRG BY/DATE TRF 7-28-00 METALLURGY BY/DATE ----	MATERIAL/HEAT TREAT TITLE 2000 SERIES MOTOR SHAFT INSTALLATION
UNSPECIFIED DRAFT ANGLES ARE ----		<input type="checkbox"/> MICROINCHES <input type="checkbox"/> MICROMETERS (MICROINCHES) THIRD ANGLE PROJECTION DO NOT SCALE	NUMBER A-683-085 SCALE 1/1 SHEET 1 OF 1
B SIZE		ARITHMETICAL AVERAGE <input checked="" type="checkbox"/>	

