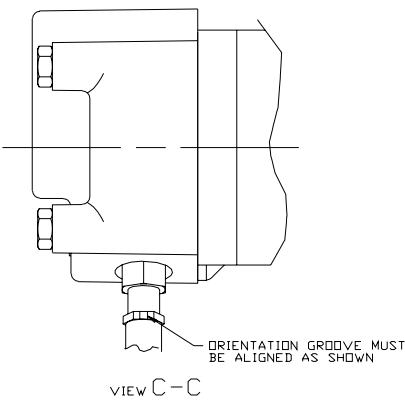
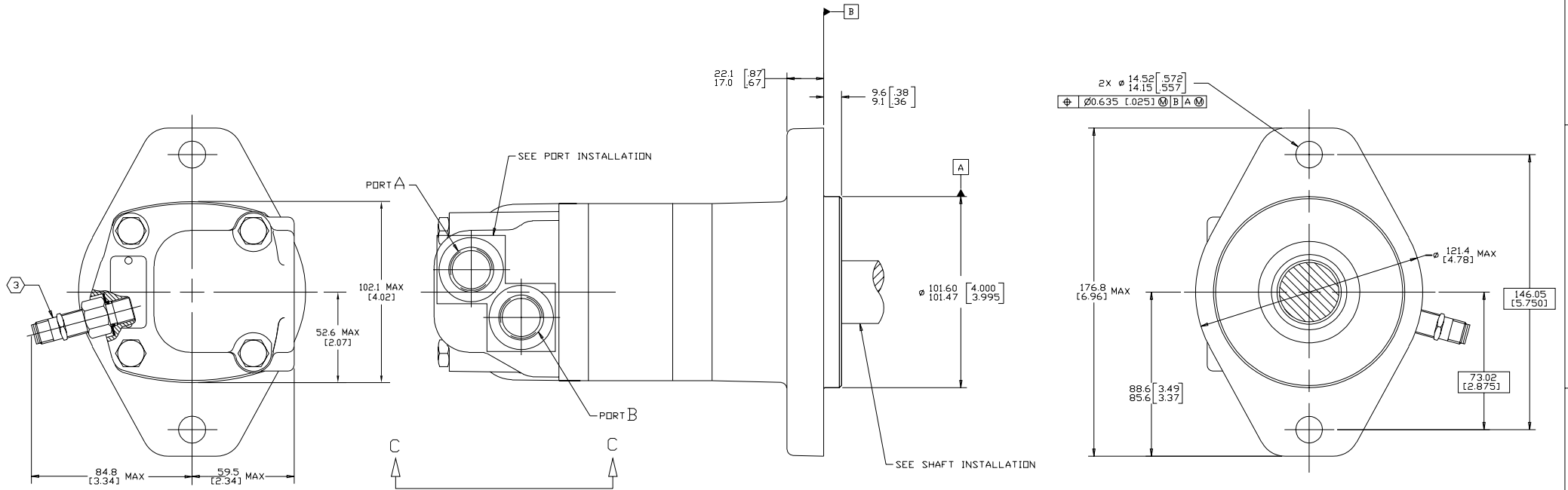


REV	DESCRIPTION	BY	CHK	DATE	ECN
A	ENGINEERING RELEASE	CMR		3-16-98	M19321
B	(6A) ADDED VIEW C-C	AGJ		10-7-99	33309
C	(4A) NOTE 2 WAS MOUNTING TYPE: F	AGJ		5-13-02	41044
D	REVISED AS PER STACK-UP	HAT		12-5-12	M87538



**NOTE**

1 ROTATION:  
 STANDARD: WHEN FACING SHAFT END OF MOTOR, SHAFT TO ROTATE;  
 CLOCKWISE WHEN PORT "A" IS PRESSURIZED  
 COUNTERCLOCKWISE WHEN PORT "B" IS PRESSURIZED  
 REVERSE: WHEN FACING SHAFT END OF MOTOR, SHAFT TO ROTATE;  
 CLOCKWISE WHEN PORT "B" IS PRESSURIZED  
 COUNTERCLOCKWISE WHEN PORT "A" IS PRESSURIZED

2 MOUNTING TYPE: AF  
 STANDARD, 2 BOLT:  $\phi$  101.6 [4.00] PILOT  
 $\phi$  14.35 [5.65] HOLES ON  $\phi$  146.0 [5.75]  
 BOLT CIRCLE "SAE B"

3 NOMINAL SENSOR OUTPUT WILL BE 30 ELECTRICAL PULSES  
 PER SHAFT REVOLUTION  
 SUPPLY VOLTAGE: 8 TO 28 Vdc  
 OUTPUT VOLTAGE: LOW .5 Vdc AT 10 mA; HIGH Vs-1 Vdc

**REVIEWED FOR CLASSIFICATION PER ESP-042**

UNLESS OTHERWISE SPECIFIED, DIMENSIONS ARE IN INCHES MILLIMETERS ARE IN METERS	DRAWING BASED ON ASME Y14.5M-1994	
TOLERANCES	THE REPRODUCTION, DISTRIBUTION AND UTILIZATION OF THIS DOCUMENT, AS WELL AS THE COMMUNICATION OF ITS CONTENTS TO OTHERS WITHOUT EXPLICIT AUTHORIZATION IS PROHIBITED. OFFENDERS WILL BE HELD LIABLE FOR THE PAYMENT OF DAMAGES. ALL RIGHTS RESERVED IN THE EVENT OF A PATENT, UTILITY MODEL, OR DESIGN. (PER ISO 9000)	
X .1	DRAWN BY DATE	MATERIAL/HEAT TREAT
XX .01	CMR 3-27-98	
XXX .005	CHECKED BY DATE	
∠	GCB 3-30-98	
UNSPECIFIED RADI ARE	ENG'D BY DATE	TITLE
----	JDM 4-2-98	2000 SERIES MOTOR INSTALL
UNSPECIFIED DRAFT ANGLES ARE	METALLURGY BY DATE	
----		
DRAWING FORMAT CASE <input type="checkbox"/> MANUAL <input type="checkbox"/>	THIRD ANGLE PROJECTION	MICROFINISH MICROFINISH NUMBER
<input type="checkbox"/> DO NOT SCALE	<input checked="" type="checkbox"/> ARITHMETICAL AVERAGE	A-667-011
	SCALE 1/1	SHEET 1 OF 1