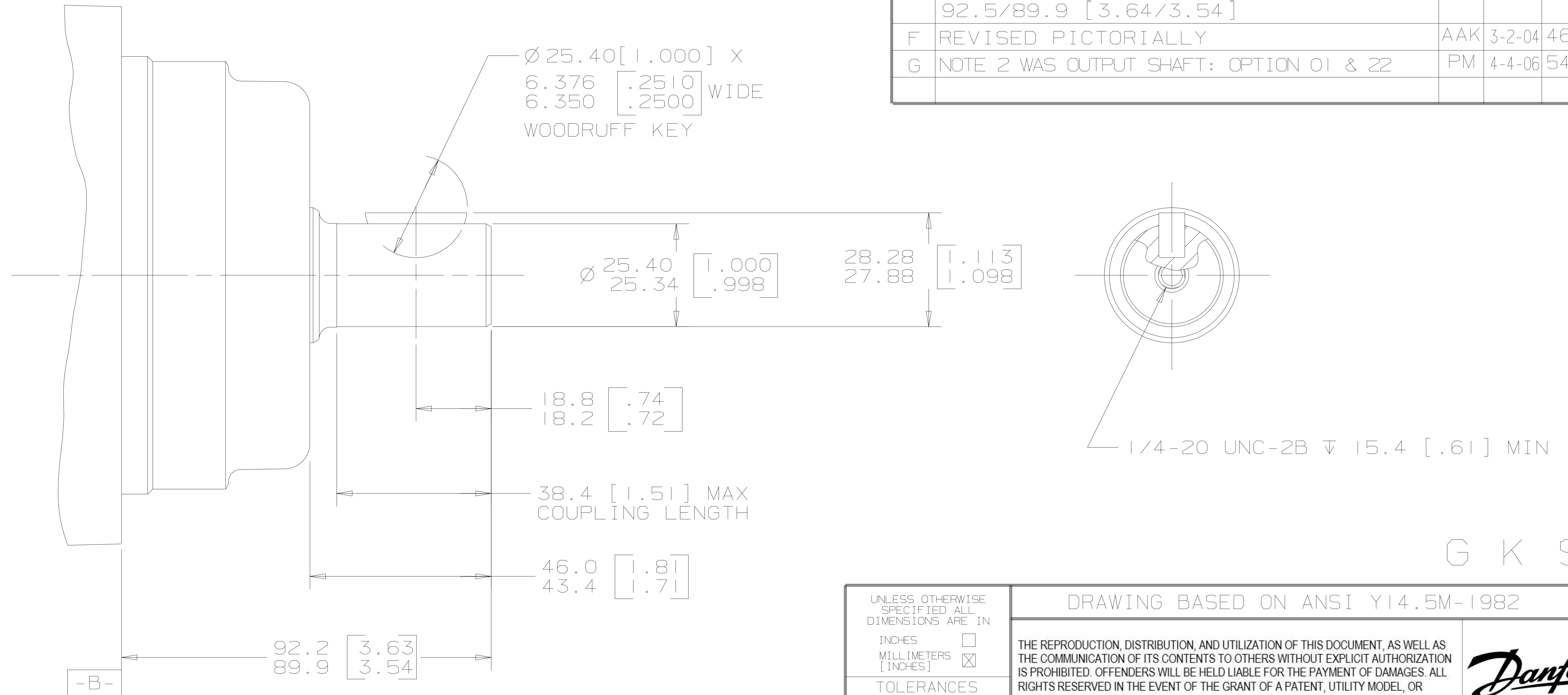


REV	DESCRIPTION	BY	DATE	ECN
A	ENGINEERING RELEASE	AGJ	5-26-93	22833
B	REVISED PICTORIALY	JMS	7-29-99	33164
C	REVISED PICTORIALY	MLL	11-20-00	36676
D	NOTE 1 WAS MOUNTING TYPE: OPTION B	AGJ	5-13-02	41044
E	92.2/89.9 [3.63/3.54] WAS 92.5/89.9 [3.64/3.54]	AGJ	5-17-04	47918
F	REVISED PICTORIALY	AAK	3-2-04	46977
G	NOTE 2 WAS OUTPUT SHAFT: OPTION 01 & 22	PM	4-4-06	54522



G K S

NOTE
 1 MOUNTING TYPE: OPTION AB
 2 OUTPUT SHAFT: OPTION 01 & 15

UNLESS OTHERWISE SPECIFIED ALL DIMENSIONS ARE IN INCHES <input type="checkbox"/> MILLIMETERS [INCHES] <input checked="" type="checkbox"/>	DRAWING BASED ON ANSI Y14.5M-1982	
	THE REPRODUCTION, DISTRIBUTION, AND UTILIZATION OF THIS DOCUMENT, AS WELL AS THE COMMUNICATION OF ITS CONTENTS TO OTHERS WITHOUT EXPLICIT AUTHORIZATION IS PROHIBITED. OFFENDERS WILL BE HELD LIABLE FOR THE PAYMENT OF DAMAGES. ALL RIGHTS RESERVED IN THE EVENT OF THE GRANT OF A PATENT, UTILITY MODEL, OR DESIGN. (PER ISO 16016)	
TOLERANCES .X ± ---- .XX ± REF .XXX ± ONLY < ± ----	DRAWN BY/DATE A. JOHNSON 3-8-93 CHECKED BY/DATE SDR 6-24-93 ENGRG BY/DATE SZ 6-28-93 METALLURGY BY/DATE	MATERIAL/HEAT TREAT TITLE 2000 SERIES MOTOR SHAFT INSTALLATION
UNSPECIFIED RADII ARE ----	<input type="checkbox"/> MICROINCHES <input type="checkbox"/> MICROMETERS [MICROINCHES]	NUMBER A-682-001
UNSPECIFIED DRAFT ANGLES ARE ----	<input checked="" type="checkbox"/> THIRD ANGLE PROJECTION <input type="checkbox"/> DO NOT SCALE	ARITHMETICAL AVERAGE <input checked="" type="checkbox"/> SCALE 1/1 SHEET 1 OF 1
DRAWING FORMAT CADD <input checked="" type="checkbox"/> MANUAL <input type="checkbox"/>		

