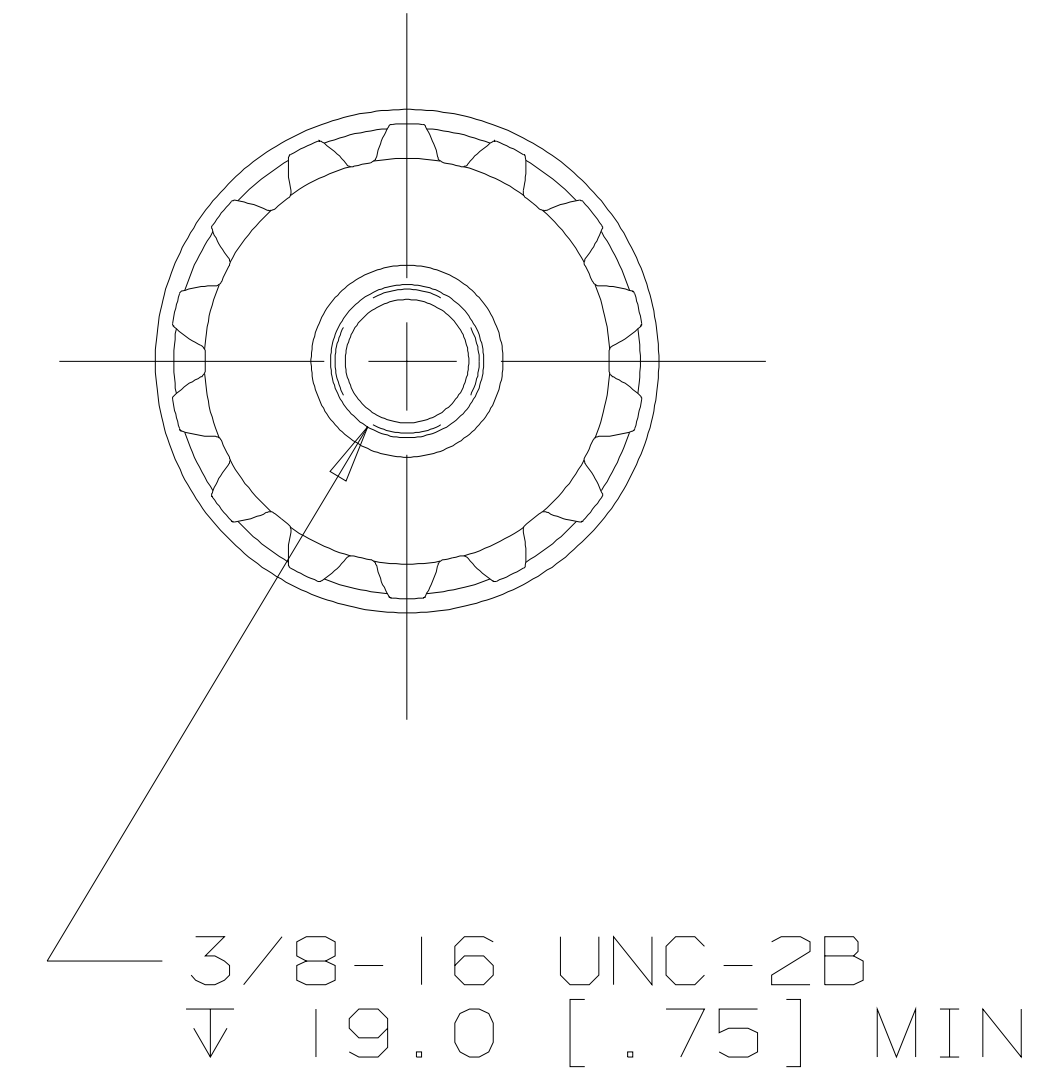
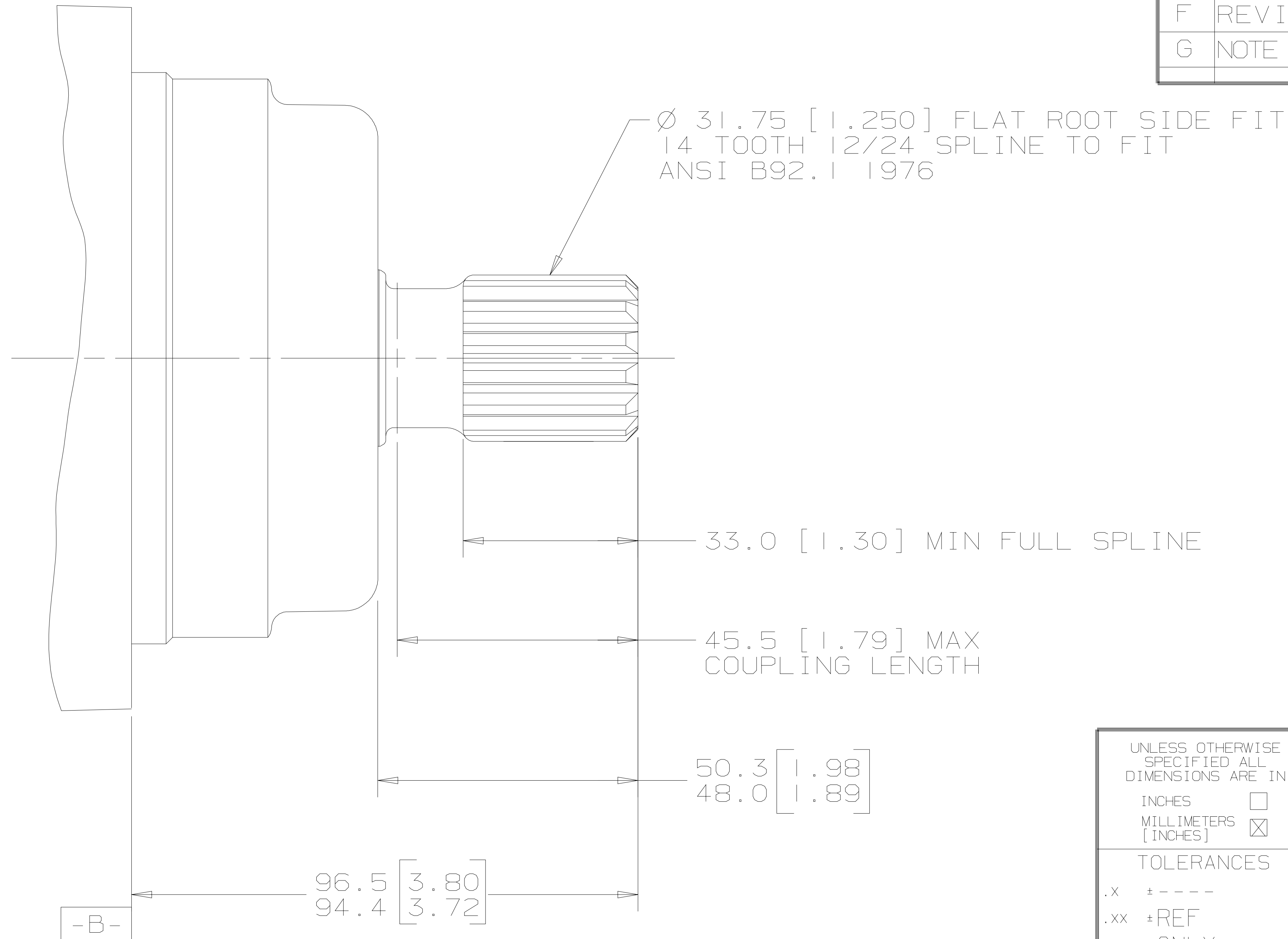


REV	DESCRIPTION	BY	DATE	ECN
A	ENGINEERING RELEASE	AGJ	5-26-93	22833
B	REVISED PICTORIALY	JMS	7-29-99	33164
C	REVISED PICTORIALY	MLL	11-20-00	36676
D	NOTE 1 WAS MOUNTING TYPE: OPTION B	AGJ	5-13-02	41044
E	96.5/94.4 [3.80/3.72] WAS 96.8/94.4 [3.81/3.72]	AGJ	5-17-04	47918
F	REVISED PICTORIALY	AAK	3-2-04	46977
G	NOTE 2 WAS OUTPUT SHAFT: OPTION 04 & 28	PM	4-4-06	54522



G K S

NOTE

- 1 MOUNTING TYPE: OPTION AB
- 2 OUTPUT SHAFT: OPTION 04 & 21

UNLESS OTHERWISE SPECIFIED ALL DIMENSIONS ARE IN INCHES <input type="checkbox"/> MILLIMETERS [INCHES] <input checked="" type="checkbox"/>		DRAWING BASED ON ANSI Y14.5M-1982	
TOLERANCES .X ± ---- .XX ± REF .XXX ± ONLY ∠ ± ----		THE REPRODUCTION, DISTRIBUTION, AND UTILIZATION OF THIS DOCUMENT, AS WELL AS THE COMMUNICATION OF ITS CONTENTS TO OTHERS WITHOUT EXPLICIT AUTHORIZATION IS PROHIBITED. OFFENDERS WILL BE HELD LIABLE FOR THE PAYMENT OF DAMAGES. ALL RIGHTS RESERVED IN THE EVENT OF THE GRANT OF A PATENT, UTILITY MODEL, OR DESIGN. (PER ISO 16016)	
UNSPECIFIED RADII ARE ----		DRAWN BY/DATE A. JOHNSON 3-8-93	MATERIAL/HEAT TREAT
UNSPECIFIED DRAFT ANGLES ARE ----		CHECKED BY/DATE SDR 6-24-93	TITLE 2000 SERIES MOTOR SHAFT INSTALLATION
DRAWING FORMAT CADD <input checked="" type="checkbox"/> MANUAL <input type="checkbox"/>		ENGRG BY/DATE SZ 6-28-93	
THIRD ANGLE PROJECTION DO NOT SCALE		METALLURGY BY/DATE	SCALE 1/1
ARITHMETICAL AVERAGE <input checked="" type="checkbox"/>		SHEET 1 OF 1	

