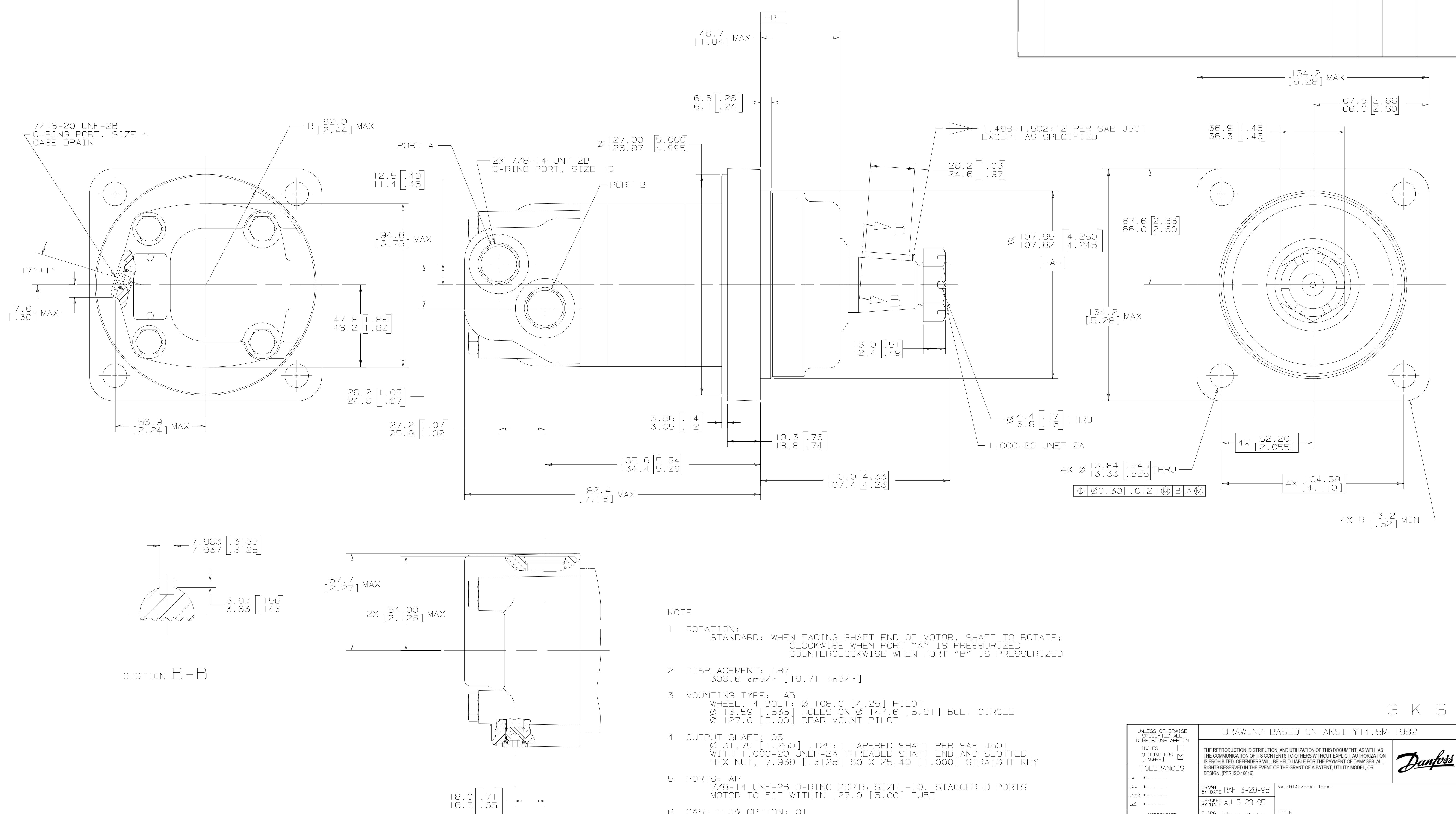


REV	DESCRIPTION	BY	CHK	DATE	ECN
A	ENGINEERING RELEASE	RAF	AJ	3-23-95	MI3234A
G	REVISED	RG		6-26-06	56090



- NOTE
- ROTATION: STANDARD: WHEN FACING SHAFT END OF MOTOR, SHAFT TO ROTATE: CLOCKWISE WHEN PORT "A" IS PRESSURIZED COUNTERCLOCKWISE WHEN PORT "B" IS PRESSURIZED
  - DISPLACEMENT: 187 306.6 cm<sup>3</sup>/r [18.71 in<sup>3</sup>/r]
  - MOUNTING TYPE: AB  
WHEEL, 4 BOLT: Ø 108.0 [4.25] PILOT  
Ø 13.59 [0.535] HOLES ON Ø 147.6 [5.81] BOLT CIRCLE  
Ø 127.0 [5.00] REAR MOUNT PILOT
  - OUTPUT SHAFT: 03  
Ø 31.75 [1.250] .125:1 TAPERED SHAFT PER SAE J501  
WITH 1.000-20 UNEF-2A THREADED SHAFT END AND SLOTTED  
HEX NUT, 7.938 [0.3125] SQ X 25.40 [1.000] STRAIGHT KEY
  - PORTS: AP  
7/8-14 UNF-2B O-RING PORTS SIZE -10, STAGGERED PORTS  
MOTOR TO FIT WITHIN 127.0 [5.00] TUBE
  - CASE FLOW OPTION: 01  
7/16-20 UNF-2B SAE O-RING PORT SIZE -4

G K S

UNLESS OTHERWISE SPECIFIED ALL DIMENSIONS ARE IN		DRAWING BASED ON ANSI Y14.5M-1982	
INCHES <input type="checkbox"/>	MILLIMETERS <input checked="" type="checkbox"/>	THE REPRODUCTION, DISTRIBUTION, AND UTILIZATION OF THIS DOCUMENT, AS WELL AS THE COMMUNICATION OF ITS CONTENTS TO OTHERS WITHOUT EXPRESS AUTHORIZATION IS PROHIBITED. OFFENDERS WILL BE HELD LIABLE FOR THE PAYMENT OF DAMAGES. ALL RIGHTS RESERVED IN THE EVENT OF THE GRANT OF A PATENT, UTILITY MODEL OR DESIGN (PER ISO 16016)	
TOLERANCES		Danford	
.X	----	DRWN BY/DATE RAF 3-28-95	MATERIAL/HEAT TREAT
.XX	----	CHECKED BY/DATE AJ 3-29-95	
.XXX	----	ENGR BY/DATE MB 3-29-95	TITLE
<	----	METALLURGY	2000 SERIES MOTOR INSTALL
UNSPECIFIED RADI	ARE	THIRD ANGLE PROJECTION	NUMBER
UNSPECIFIED DRAFT ANGLES	ARE	DO NOT SCALE	105-1243-006
DRAWING FORMAT	CADD <input checked="" type="checkbox"/> MANUAL <input type="checkbox"/>	ARTHEMATICAL AVERAGE	SCALE 1/1 SHEET 1 OF 1