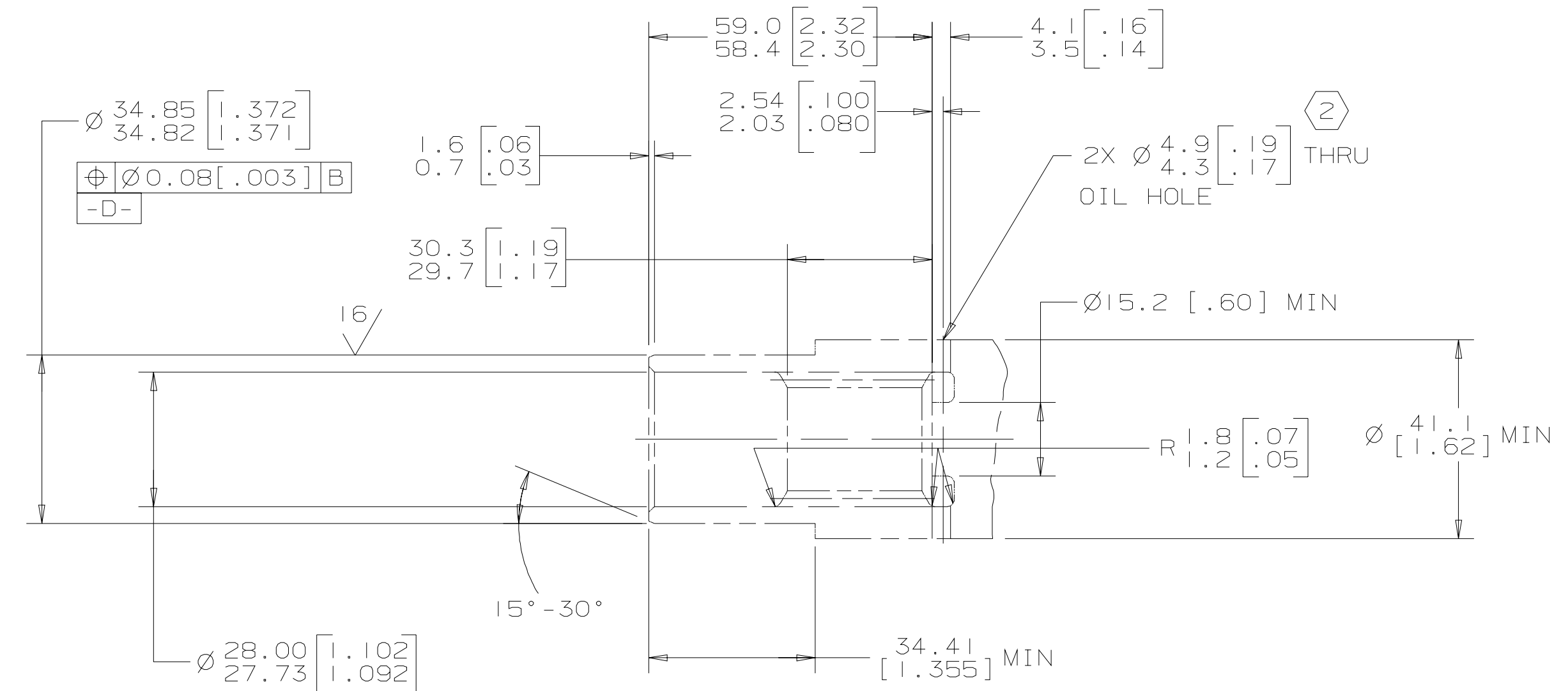
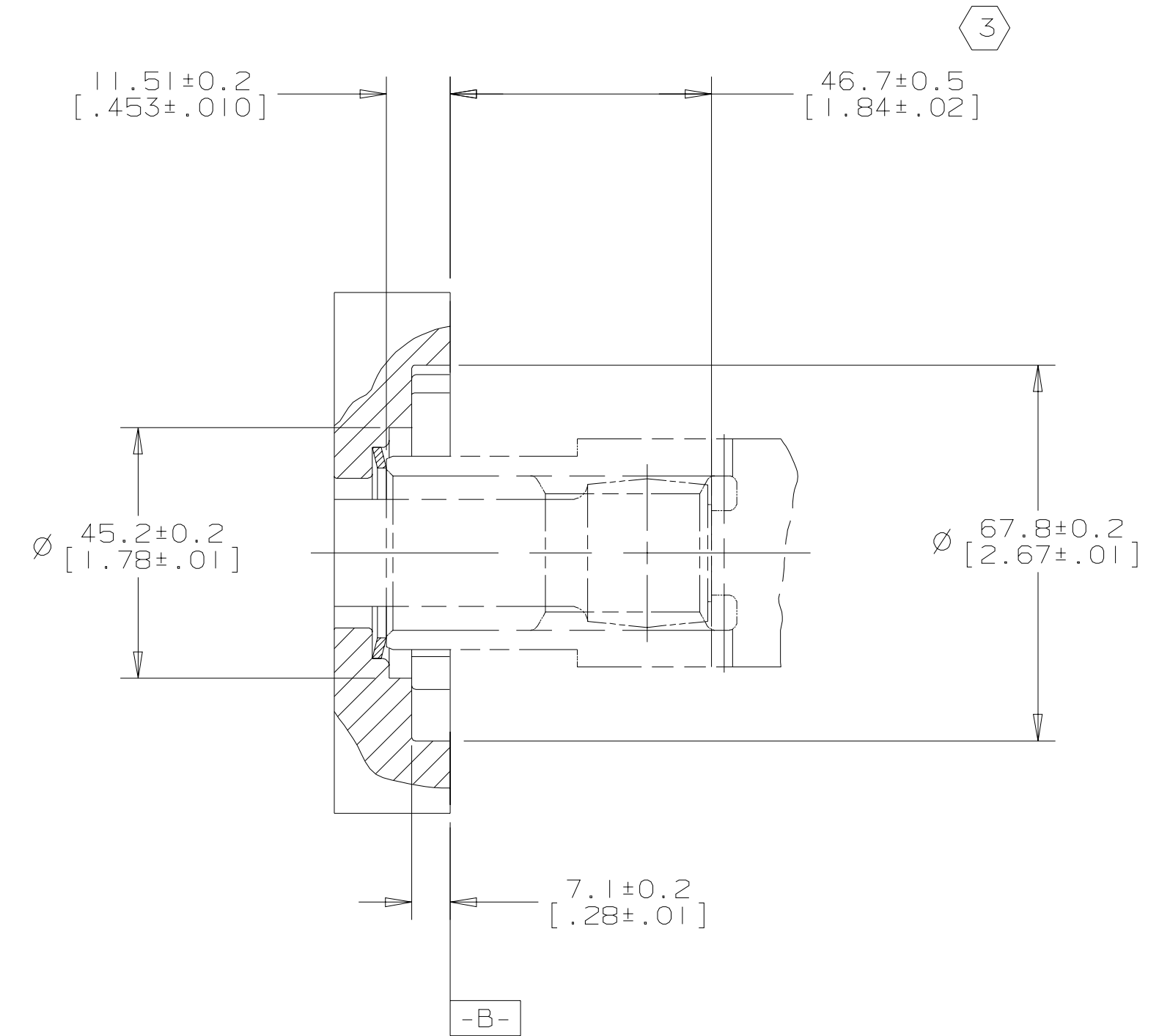


REV	DESCRIPTION	BY	CHK	DATE	ECN
A	ENGINEERING RELEASE	AGJ		10-23-03	M60182



INTERNAL INVOLUTE SPLINE DATA	
SPLINE PITCH	12/24
PRESSURE ANGLE	30°
NUMBER OF TEETH	12
CLASS OF FIT - REF.	5
TYPE OF FIT	SIDE
PITCH DIAMETER - REF.	25.400000 [1.000000] $\sqrt{0.21 [0.008] D}$
BASE DIAMETER - REF.	21.997045 [0.8660254]
MAJOR DIAMETER	27.74 [1.092] MAX 27.59 [1.086] MIN
MINOR DIAMETER	23.097-23.224 [0.9093-.9143]
FORM DIAMETER, MIN.	26.93 [1.060]
FILLET RADIUS	0.64-0.76 [0.025-.030]
TIP RADIUS	0.25-0.38 [0.010-.015]
FINISH	(63)
INVOLUTE PROFILE VARIATION	+0.000 -0.025 [+0.0000 -0.0010]
TOTAL INDEX VARIATION	0.038 [0.0015]
LEAD VARIATION	0.013 [0.0005]
CIRCULAR SPACE WIDTH:	
MAXIMUM ACTUAL	4.318 [0.1700]
MINIMUM EFFECTIVE	4.216 [0.1660]
MAXIMUM EFFECTIVE - REF.	4.270 [0.1681]
MINIMUM ACTUAL - REF.	4.247 [0.1672]
DIMENSION BETWEEN TWO PINS - REF.	19.020-19.190 [0.7488-.7555]
PIN DIAMETER	4.496 [0.1770] - NOTE: PIN TO HAVE 3.38 [0.133] WIDE FLAT FOR ROOT CLEARANCE

INSTALLATION INFORMATION

- 1 INTERNAL SPLINE IN MATING PART TO BE PER SPLINE DATA SPEC. MATERIAL TO BE ASTM A304, 8620H VACUUM DEGAZED ALLOY STEEL CARBURIZE TO A HARDNESS OF 59-62 Rc WITH CASE DEPTH (TO 50 Rc) 0.76-1.02 [0.030-.040] DIMENSIONS APPLY AFTER HEAT TREAT
- 2 MATING PART TO HAVE CRITICAL DIMENSIONS AS SHOWN OIL HOLES MUST BE PROVIDED AND OPEN FOR PROPER CIRCULATION
- 3 47.2 [1.86] MAX DIMENSION TO BE MAINTAINED WHEN ASSEMBLING SHIPPING AND INSTALLING UNIT TO INSURE VALVE DRIVE ENGAGEMENT WITH VALVE.

UNLESS OTHERWISE SPECIFIED ALL DIMENSIONS ARE IN		DRAWING BASED ON ANSI Y14.5M-1982	
INCHES <input type="checkbox"/>	MILLIMETERS <input checked="" type="checkbox"/>	THE REPRODUCTION, DISTRIBUTION, AND UTILIZATION OF THIS DOCUMENT, AS WELL AS THE COMMUNICATION OF ITS CONTENTS TO OTHERS WITHOUT EXPLICIT AUTHORIZATION IS PROHIBITED. OFFENDERS WILL BE HELD LIABLE FOR THE PAYMENT OF DAMAGES. ALL RIGHTS RESERVED IN THE EVENT OF THE GRANT OF A PATENT, UTILITY MODEL, OR DESIGN. (PER ISO 16016)	
TOLERANCES			
.XX +REF	.XXX +ONLY		
DRWN BY/DATE AGJ 10-29-03	MATERIAL/HEAT TREAT	2000 SERIES MOTOR COUPLING INSTALLATION	
CHECKED BY/DATE SMM 10-30-03	ENGR BY/DATE TIM 10-31-03	TITLE	
UNSPECIFIED DRAFT ANGLES ARE	METALLURGY BY/DATE	NUMBER A-684-012	
UNSPECIFIED DRAFT ANGLES ARE	THIRD ANGLE PROJECTION	SCALE 1/1 SHEET 1 OF 1	
DRAWING FORMAT CAD <input checked="" type="checkbox"/> MANUAL <input type="checkbox"/>	DO NOT SCALE	ARITHMETICAL AVERAGE	

G S K