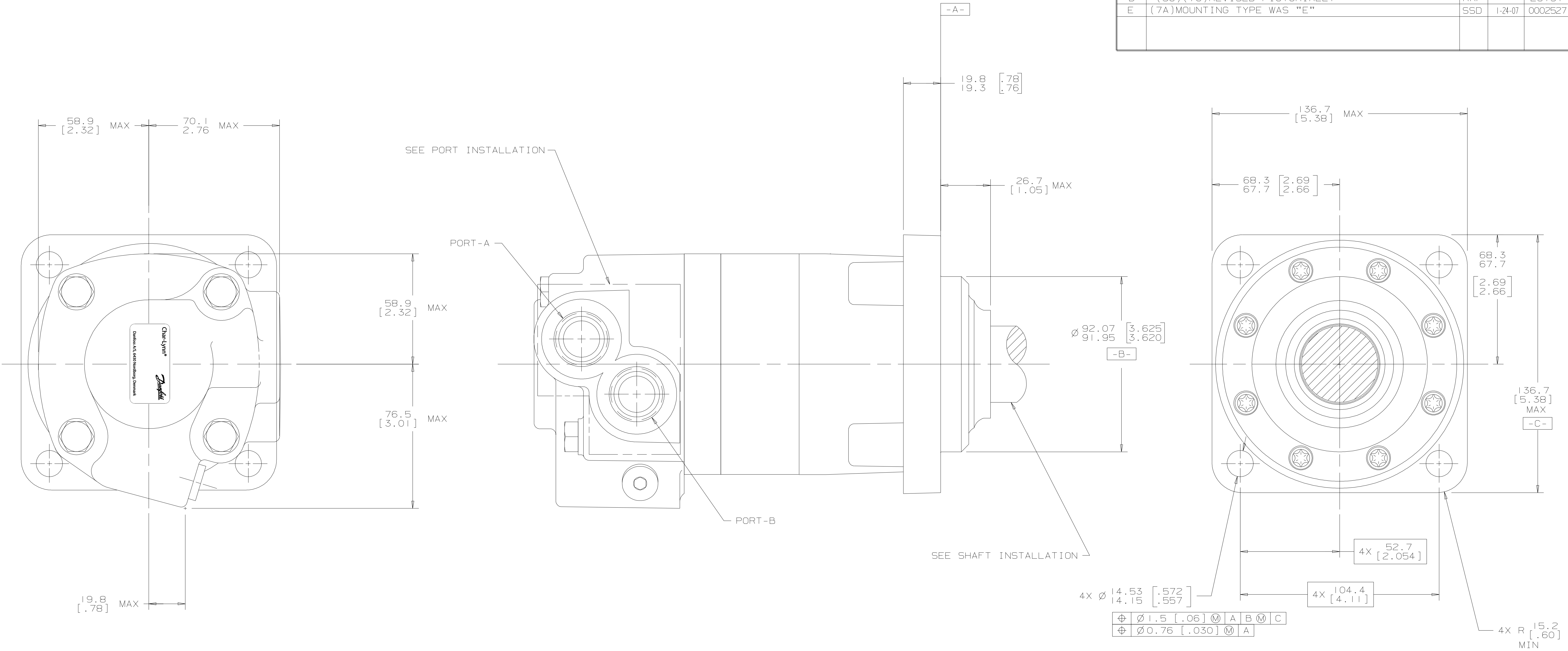


SYM	REVISION	BY	DATE	ECN
A	ENGINEERING RELEASE	SDR	2-8-92	21551
B	(7B) REMOVED 18°/16°	AGJ	11-22-95	27499
C	(2B) 4X 104.4 [4.11] WAS 4X 147.6 [5.81]	SDR	5-14-96	M15285A
D	(5C) (7C) REVISED PICTORIALY	RAF	2-5-97	29191
E	(7A) MOUNTING TYPE WAS "E"	SSO	1-24-07	0002527



NOTE

1. ROTATION:
 STANDARD: WHEN FACING SHAFT END OF MOTOR, SHAFT TO ROTATE:
 CLOCKWISE WHEN PORT "A" IS PRESSURIZED
 COUNTERCLOCKWISE WHEN PORT "B" IS PRESSURIZED

REVERSE: WHEN FACING SHAFT END OF MOTOR, SHAFT TO ROTATE:
 CLOCKWISE WHEN PORT "B" IS PRESSURIZED.
 COUNTERCLOCKWISE WHEN PORT "A" IS PRESSURIZED

2. MOUNTING TYPE: AE
 STANDARD, 4 BOLT: 92.08 [3.625] PILOT DIA.
 14.27 [.562] DIA. HOLES ON 147.57 [5.810]
 DIA. BOLT CIRCLE (SHORT)

UNLESS OTHERWISE SPECIFIED ALL DIMENSIONS ARE IN		DRAWING BASED ON ANSI Y14.5M-1982	
INCHES	<input type="checkbox"/>	THE REPRODUCTION, DISTRIBUTION, AND UTILIZATION OF THIS DOCUMENT, AS WELL AS THE COMMUNICATION OF ITS CONTENTS TO OTHERS WITHOUT EXPLICIT AUTHORIZATION IS PROHIBITED. OFFENDERS WILL BE HELD LIABLE FOR THE PAYMENT OF DAMAGES. ALL RIGHTS RESERVED IN THE EVENT OF THE GRANT OF A PATENT, UTILITY MODEL, OR DESIGN. (PER ISO 16016)	
MILLIMETERS	<input checked="" type="checkbox"/>		
TOLERANCES			
.XX +REF			
.XXX +ONLY		DRAWN BY/DATE: SDR 3-14-92 CHECKED BY/DATE: KJR 8-4-92 UNDESIGNED RADI: ARE ENGR: BY/DATE: RVA 8-4-92 METALLURGY BY/DATE:	MATERIAL/HEAT TREAT TITLE: 4000 MOTOR INSTALLATION
UNSPECIFIED DRAFT ANGLES ARE		THIRD ANGLE PROJECTION DO NOT SCALE	MICROINCHES MICROMETERS (MICROINCHES) NUMBER A-601 SCALE 1/1 SHEET 1 OF 1