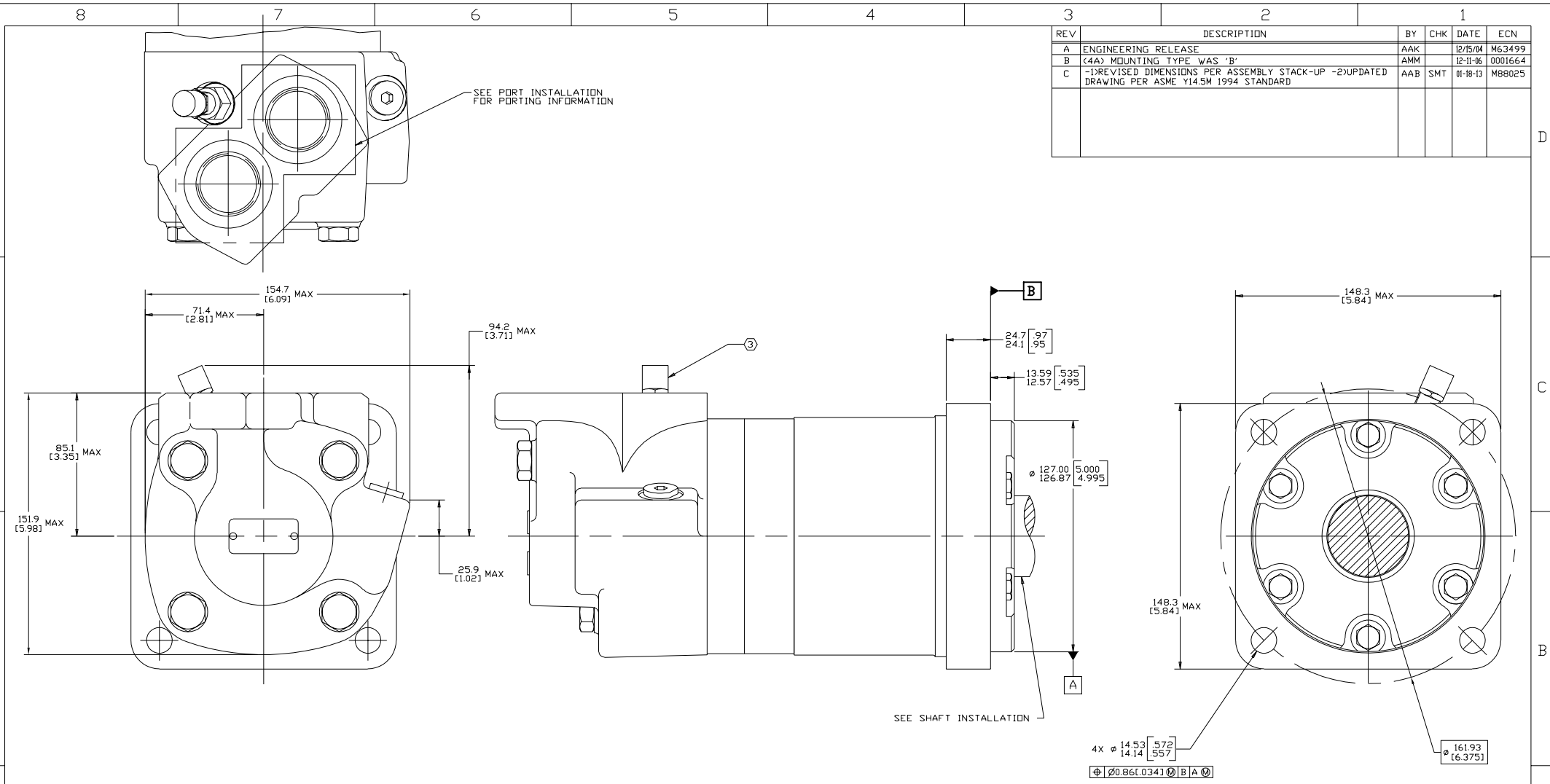


REV	DESCRIPTION	BY	CHK	DATE	ECN
A	ENGINEERING RELEASE	AAM		12/15/04	M63499
B	(4A) MOUNTING TYPE WAS 'B'	AMM		12-11-06	0001664
C	(1)REVISED DIMENSIONS PER ASSEMBLY STACK-UP (2)UPDATED DRAWING PER ASME Y14.5M 1994 STANDARD	AAB	SMT	01-18-13	M68025



NOTE

- ROTATION
  - STANDARD; WHEN FACING SHAFT END OF MOTOR, SHAFT TO ROTATE: CLOCKWISE WHEN PORT "A" IS PRESSURIZED COUNTERCLOCKWISE WHEN PORT "B" IS PRESSURIZED
  - REVERSE; WHEN FACING SHAFT END OF MOTOR, SHAFT TO ROTATE: CLOCKWISE WHEN PORT "B" IS PRESSURIZED COUNTERCLOCKWISE WHEN PORT "A" IS PRESSURIZED
- MOUNTING TYPE: AB
  - STANDARD, (SAE CC), 4 BOLT:  $\phi$ 127.0 [5.00] PILD  $\phi$ 14.35 [0.565] HOLES ON  $\phi$ 162.0 [6.38] BOLT CIRCLE
- NOMINAL SENSOR OUTPUT WILL BE 30 ELECTRICAL PULSES PER SHAFT REVOLUTION
  - SUPPLY VOLTAGE: 8 TO 28 Vdc
  - OUTPUT VOLTAGE: LOW .5 Vdc AT 10 mA; HIGH Vs-1 Vdc

**REVIEWED FOR CLASSIFICATION PER ESP-042**

DRAWING BASED ON ASME Y14.5M-1994

UNLESS OTHERWISE SPECIFIED ALL DIMENSIONS ARE IN INCHES <input type="checkbox"/> MILLIMETERS <input checked="" type="checkbox"/>	THE REPRODUCTION, DISTRIBUTION AND UTILIZATION OF THIS DOCUMENT, AS WELL AS THE COMMUNICATION OF ITS CONTENTS TO OTHERS WITHOUT EXPLICIT AUTHORIZATION IS PROHIBITED. OFFENDERS WILL BE HELD LIABLE FOR THE PAYMENT OF DAMAGES. ALL RIGHTS RESERVED IN THE EVENT OF THE GRANT OF A PATENT, UTILITY MODEL, OR DESIGN (PER ISO 10100)		<i>Danfors</i>
TOLERANCES	DRAWN BY/DATE	CHECKED BY/DATE	MATERIAL HEAT TREAT
X ±	AM 12-22-04	AGJ 12-23-04	-
XX ±			
XXX ±			
UNSPECIFIED RADI ARE:	ENGR: AL	BY/DATE: 12-23-04	TITLE
REWORK BY/DATE			6000 SERIES MOTOR INSTALLATION
UNSPECIFIED DRAFT ANGLES ARE:	THIRD ANGLE PROJECTION	DO NOT SCALE	SCALE 1/1 SHEET 1 OF 1
D SIZE			

NUMBER A-2631-001