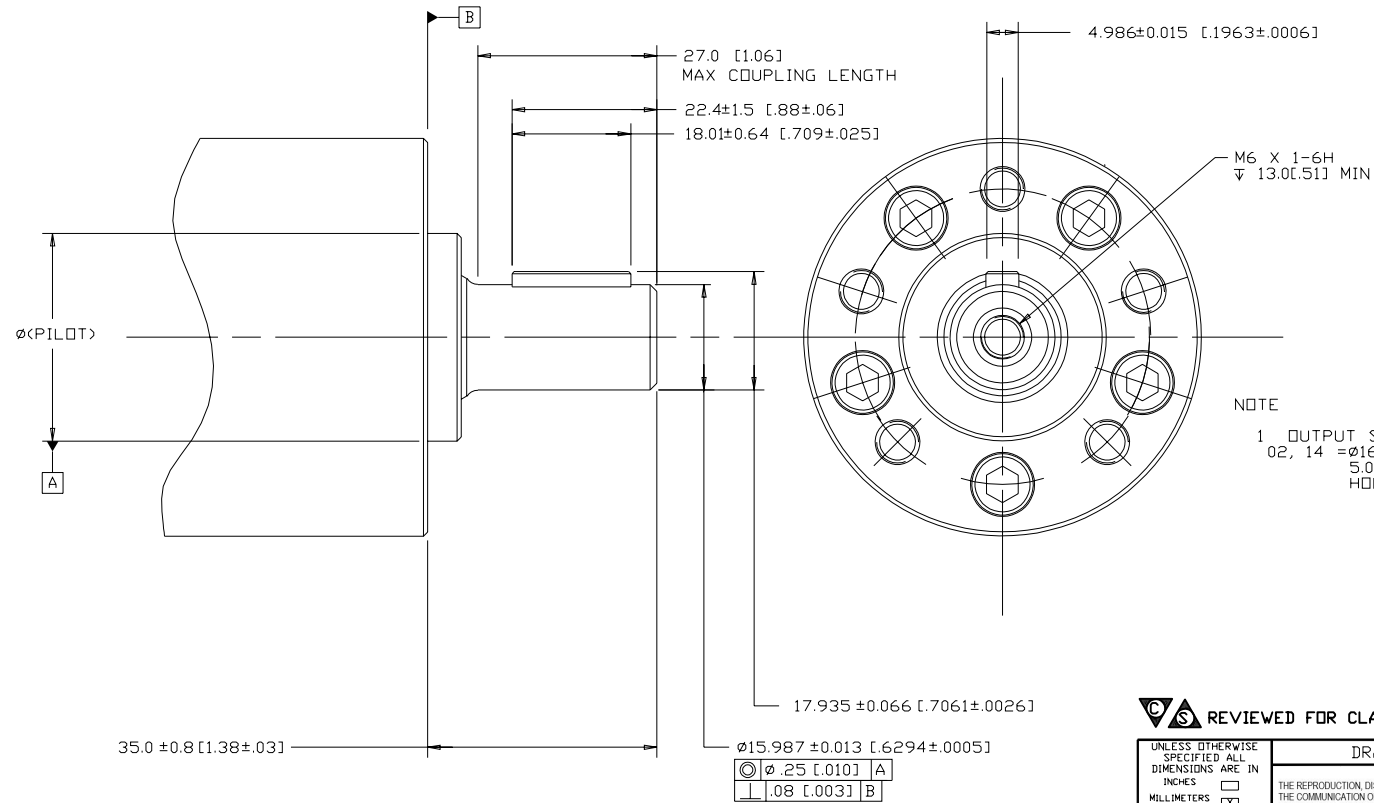


REV	DESCRIPTION	BY	CHK	DATE	ECN / MPS
A	RELEASE FOR SAMPLES AND ESTIMATES	MA		2-15-91	X5218
C	1)REVISED 2)ENGINEERING RELEASE	MA		7-22-91	20855
D	(2C)M6X1-6H ∇ 13.0[.51] MIN WAS M6X1-6H ∇ 9.9[.39] MIN	AGJ		2-25-92	21800
E	(4A)34.8 \pm 0.8 [1.37 \pm .03] WAS 35.1 \pm 1.0 [1.38 \pm .04]	JSB		3-27-08	ECR-8713
F	-1)(4A)35.0 \pm 0.8 [1.38 \pm .03] WAS 34.8 \pm 0.8 [1.37 \pm .03] -2)(3C)MAX COUPLING LENGTH WAS 26.2 [1.03] -3)DRAWING UPDATED TO ASME Y14.5-2009 STANDRAD -4)(2B)REMOVED MODEL CODE - M0JXX... -5)(2B)REMOVED NOTE 2 UNLESS OTHERWISE SPECIFIED..... -6)(2B) NOTE 1 WAS OUTPUT SHAFT 02 = \varnothing 16.00.....	CSG		1-27-14	M91725



CS REVIEWED FOR CLASSIFICATION PER ESP-042

UNLESS OTHERWISE SPECIFIED ALL DIMENSIONS ARE IN		DRAWING BASED ON ASME Y14.5-2009	
INCHES	<input type="checkbox"/>	THE REPRODUCTION, DISTRIBUTION, AND UTILIZATION OF THIS DOCUMENT, AS WELL AS THE COMMUNICATION OF ITS CONTENTS TO OTHERS WITHOUT EXPLICIT AUTHORIZATION IS PROHIBITED. OFFENDERS WILL BE HELD LIABLE FOR THE PAYMENT OF DAMAGES. ALL RIGHTS RESERVED IN THE EVENT OF THE GRANT OF A PATENT, UTILITY MODEL, OR DESIGN (PER ISO 18016)	
MILLIMETERS	<input checked="" type="checkbox"/>		
TOLERANCES		MATERIAL/HEAT TREAT	
.X \pm ---		DRAWN	MA
.XX \pm ---		BY/DATE	2-15-91
.XXX \pm ---		CHECKED	DGS
\angle \pm .-		BY/DATE	3-28-91
UNSPECIFIED RADII ARE:		ENGR	DJ
		BY/DATE	3-26-91
UNSPECIFIED DRAFT ANGLES ARE:		METALLURGY	---
		BY/DATE	---
THIRD ANGLE PROJECTION		TITLE	
DO NOT SCALE		J MOTOR SHAFT INSTALLATION	
C SIZE		NUMBER	
		A-270-002	
		SCALE	
		2/1 SHEET 1 OF 1	