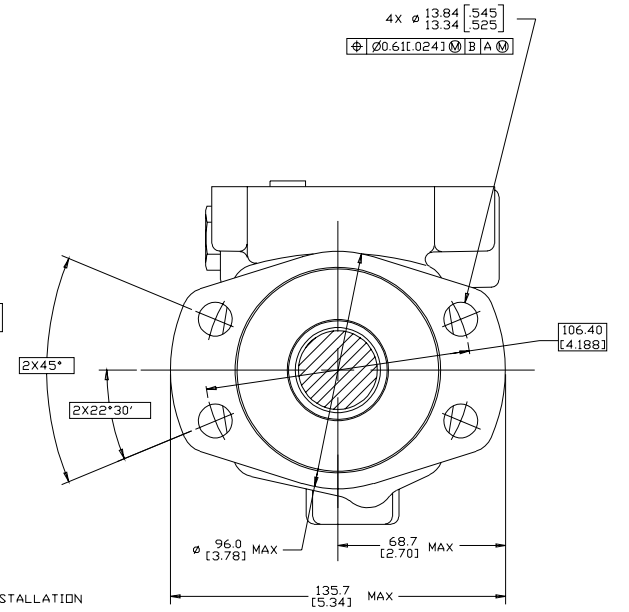
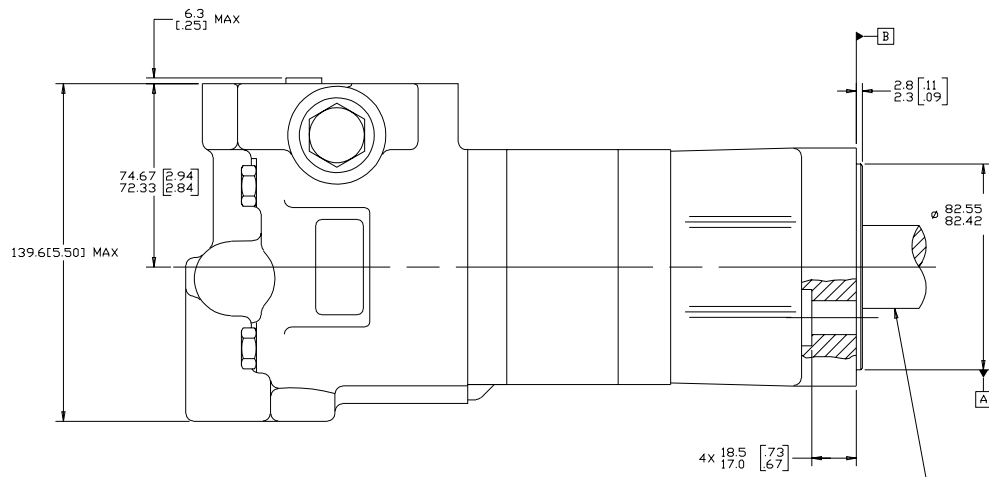
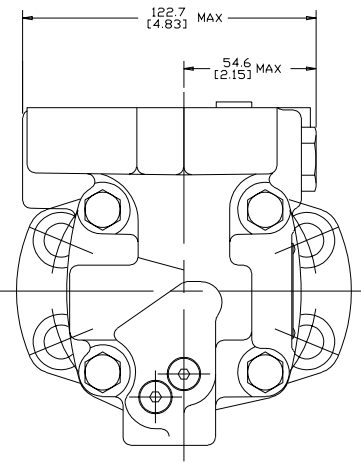
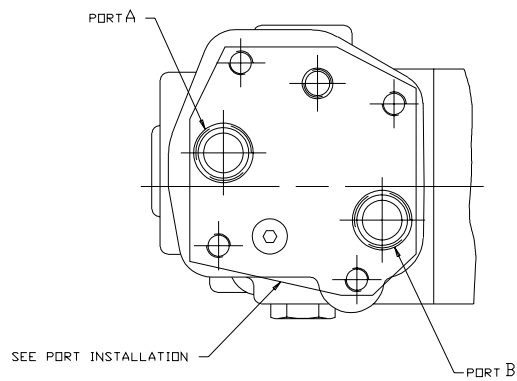


SYM	REVISION	BY	DATE	ECN
A	ENGINEERING RELEASE	RAF	11/23/93	24603
B	(1A) DOCUMENT NUMBER WAS A-671-004	RAF	3/78/94	25246
C	REVISED	SSD	6/22/09	M76245
D	-1)REVISED DIMENSIONS AS PER STACK UP -2)X6A)NOTE 2 WAS MOUNTING TYPE : J... -3)UPDATED TO ASME Y14.5-2009 STANDARD	NRT	12/13/13	M91411



NOTE

1 ROTATION:  
 STANDARD: WHEN FACING SHAFT END OF MOTOR, SHAFT TO ROTATE:  
 CLOCKWISE WHEN PORT "A" IS PRESSURIZED  
 COUNTERCLOCKWISE WHEN PORT "B" IS PRESSURIZED  
 REVERSE: WHEN FACING SHAFT END OF MOTOR, SHAFT TO ROTATE:  
 CLOCKWISE WHEN PORT "B" IS PRESSURIZED  
 COUNTERCLOCKWISE WHEN PORT "A" IS PRESSURIZED

2 MOUNTING TYPE: AJ  
 STANDARD (MAGNET), 4 BOLT:  $\phi$  82.6 [3.251] PILOT  
 $\phi$  13.59 [0.535] HOLES ON  $\phi$  106.4 [4.19] BOLT CIRCLE  
 2.79 [0.110] PILOT LENGTH

REVIEWED FOR CLASSIFICATION PER ESP -042

UNLESS OTHERWISE SPECIFIED AS IN	DRAWING BASED ON ASME Y14.5-2009	
INCHES <input type="checkbox"/>	<input type="checkbox"/>	THE REPRODUCTION, DISTRIBUTION, AND UTILIZATION OF THIS DOCUMENT, AS WELL AS THE COMBINATION OF ITS CONTENTS TO OTHERS WITHOUT EXPRESS AUTHORIZATION IS PROHIBITED. OFFENDERS WILL BE HELD LIABLE FOR THE PAYMENT OF DAMAGES. ALL RIGHTS RESERVED IN THE EVENT OF THE GRANT OF A PATENT, UTILITY MODEL, OR DESIGN (PER ISO 10200).
MILLIMETERS <input checked="" type="checkbox"/>		<i>Danfoss</i>
TOLERANCES	xx + REF	MATERIAL/HEAT TREAT
x - - - - -	BY DATE	DATE
xx + REF	DRYAN, RAF 8/10/93	8/10/93
xxx + DNLY	DATE AGJ 2/14/94	2/14/94
- - - - -	BY DATE	
UNSPECIFIED RADI ARE	ENGINE, M.L.B 2/16/94	TITLE
UNSPECIFIED DRAFT ANGLES ARE	METALLURGY	2000 SERIES - TWO SPEED MOTOR INSTALLATION
THIRD ANGLE PROJECTION	DO NOT SCALE	NUMBER
DO NOT SCALE	ARITHMETICAL AVERAGE	A-671-007
D SIZE	SCALE 1/1	SHEET 1 OF 1