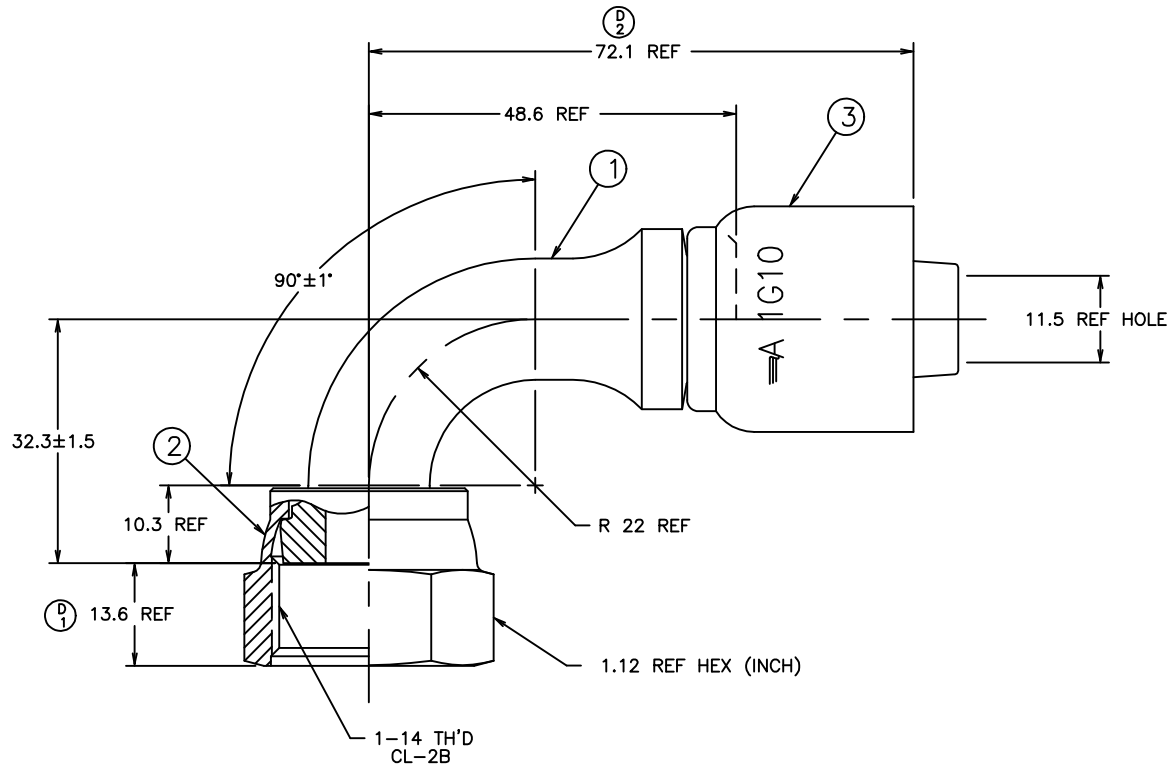


THE REPRODUCTION, DISTRIBUTION AND UTILIZATION OF THIS DOCUMENT AS WELL AS THE COMMUNICATION OF ITS CONTENTS TO OTHERS WITHOUT EXPLICIT AUTHORIZATION IS PROHIBITED. OFFENDERS WILL BE HELD LIABLE FOR THE PAYMENT OF DAMAGES. ALL RIGHTS RESERVED IN THE EVENT OF THE GRANT OF A PATENT, UTILITY MODEL OR DESIGN. (PER ISO 18018)

REVISIONS			
REV	DESCRIPTION	DATE	APPROVED
D	REDRAWN - SUPERSEDES 1GA_FRB_ SHEET 2 REV. C FOR 1GA10FRB10 (1) WAS 13.5 REF (2) WAS 72.6 REF	12-8-95	EN-F16102 DP-24900



72.1	2.84
48.6	1.91
32.3±1.5	1.27±.06
22	.87
13.6	.54
11.5	.45
10.3	.41
MM	INCH

CONVERSION

METRIC

2. 1SA10FRB10 NIPPLE ASSEMBLY MAY BE SUBSTITUTED FOR ITEMS #1 AND #2.

1. PROCESS AS FOLLOWS:
- BEND NIPPLE TO DIMENSIONS SHOWN.
 - ZINC PLATE PER ACES 2751.
 - CRIMP NUT PER ACES 2409P1.
 - ASSEMBLE SOCKET PER ACES 2813.

ITEM NO.	MATERIAL	1GA10FRB10	1F40023-1010AB	FC1473-10S	1G10
		AEROQUIP PART NUMBER	① NIPPLE	② NUT	③ SOCKET
LIST OF MATERIALS					
		DRAWN M MOLINA			
		CHECKED R.D.GARRETT			
		APPROVED R.D.GARRETT			
		RELEASE DATE 12-8-95			
		EN-F16102 DP-24900			
		SIZE C	DRAWING NUMBER 1GA10FRB10		REV D
		SCALE 2/1	DIST U	CAGE CODE 01276	SHEET NO

CONVERTED DRAWING CADAM to AutoCAD 8/98

DWG. NO. 1GA10FRB10 SH. D