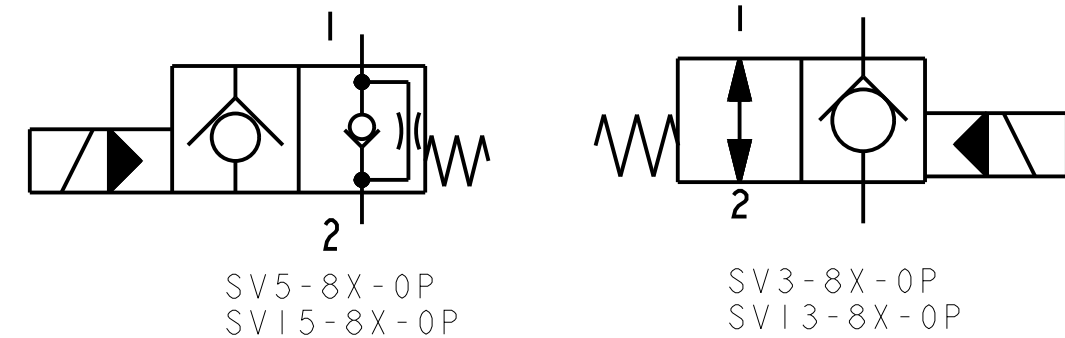


REV	DESCRIPTION	BY	CHK	DATE	ECN / MPS
A	ENGINEERING RELEASE	LMD	JGS	2-12-05	M63978
B	ADDED SYMBOL FOR SV13-8X-0P	YKP	IIK	11/04/11	M81045B
C	ADDED SYMBOL FOR SV15-8X-0P	YKP	IIK	10/24/13	0088404
D	CORE TUBE ASSEMBLY 6026515-001 WAS 02-179033	MBK	YKP	09/14/15	0113337



NOTE:

- USE VALVE CAVITY: C-8-2
- NET WEIGHT:
 CARTRIDGE: .12 kg [.26 lb]
 CARTRIDGE W/COIL: .32 kg [.70 lb]
 CARTRIDGE W/COIL AND ALUMINUM BODY: .93 kg [2.04 lb]
- TORQUE INTO CAVITY:
 ALUMINUM CAVITY: 34-41 N.m [25-30 lbf.ft]
 STEEL CAVITY 34-41 N.m [25-30 lbf.ft]

UNLESS OTHERWISE SPECIFIED ALL DIMENSIONS ARE IN INCHES		DRAWING BASED ON ASME Y14.5-2009	
MILLIMETERS (INCHES)	<input checked="" type="checkbox"/>	THE REPRODUCTION, DISTRIBUTION, AND UTILIZATION OF THIS DOCUMENT, AS WELL AS THE COMMUNICATION OF ITS CONTENTS TO OTHERS WITHOUT EXPLICIT AUTHORIZATION IS PROHIBITED. OFFENDERS WILL BE HELD LIABLE FOR THE PAYMENT OF DAMAGES. ALL RIGHTS RESERVED IN THE EVENT OF THE GRANT OF A PATENT, UTILITY MODEL, OR DESIGN. (PER ISO 16016)	
TOLERANCES			
.X ±			
.XX ±		DRAWN JGS	MATERIAL/HEAT TREAT
.XXX ±		BY/DATE 12/6/04	
< ±		CHECKED LMD	
UNSPECIFIED RADII ARE:	----	BY/DATE 1/10/05	
UNSPECIFIED DRAFT ANGLES ARE:	----	ENGRG NF	TITLE
		BY/DATE 1/10/05	SV3/13-8, SV5/15-8
		METALLURGY	PUSH TYPE MANUAL OVERRIDE INST.
		BY/DATE	
			MICROINCHES (MICROMETERS)
		THIRD ANGLE PROJECTION	<input checked="" type="checkbox"/>
B SIZE		DO NOT SCALE	ARITHMETICAL AVERAGE
			NUMBER
			A-2416-107
			SCALE 1/1
			SHEET 1 OF 1