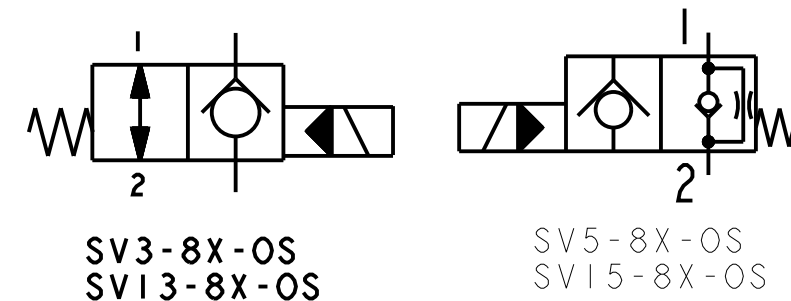


REV	DESCRIPTION	BY	CHK	DATE	ECN / MPS
A	ENGINEERING RELEASE	LMD	JGS	2-12-05	M63978
B	ADDED SYMBOL	VR	IIK	08/25/11	M81045A
C	ADDED SYMBOL FOR SV13-8X-OS	YKP	IIK	11/04/11	M81045B
D	ADDED SYMBOL FOR SV15-8X-OS	YKP	IIK	10/24/13	0088404
E	CORE TUBE ASSEMBLY 6026514-001 WAS 02-179034	MBK	YKP	09/14/15	0113337



NOTE

- USE VALVE CAVITY #C-8-2
- NET WEIGHT:  
 CARTRIDGE ONLY: 0.12 kg [.26 lb]  
 CARTRIDGE W/COIL: 0.32 kg [.70 lb]  
 CARTRIDGE W/COIL AND STEEL BODY: 0.93 kg [2.04 lb]
- TORQUE INTO CAVITY:  
 ALUMINUM CAVITY: 34-41 N·m [25-30 lbf·ft]  
 STEEL CAVITY: 34-41 N·m [25-30 lbf·ft]

UNLESS OTHERWISE SPECIFIED ALL DIMENSIONS ARE IN INCHES <input type="checkbox"/> MILLIMETERS (INCHES) <input checked="" type="checkbox"/>	DRAWING BASED ON ASME Y14.5-2009	
	THE REPRODUCTION, DISTRIBUTION, AND UTILIZATION OF THIS DOCUMENT, AS WELL AS THE COMMUNICATION OF ITS CONTENTS TO OTHERS WITHOUT EXPLICIT AUTHORIZATION IS PROHIBITED. OFFENDERS WILL BE HELD LIABLE FOR THE PAYMENT OF DAMAGES. ALL RIGHTS RESERVED IN THE EVENT OF THE GRANT OF A PATENT, UTILITY MODEL, OR DESIGN. (PER ISO 16016)	
TOLERANCES .X ± ---- .XX ± ---- .XXX ± ---- < ± ----	DRAWN LMD BY/DATE 9-12-05 CHECKED JGS BY/DATE 10-26-05 ENGRG JGS BY/DATE 10-26-05 METALLURGY ---- BY/DATE	MATERIAL/HEAT TREAT       TITLE SCREW TYPE MANUAL OVERRIDE INST.
UNSPECIFIED RADII ARE: ----  UNSPECIFIED DRAFT ANGLES ARE: ----°	THIRD ANGLE PROJECTION DO NOT SCALE	MICROINCHES <input checked="" type="checkbox"/> MICROMETERS (MICROINCHES) <input type="checkbox"/> ARITHMETICAL AVERAGE <input checked="" type="checkbox"/>
B SIZE	NUMBER A-2416-106	SCALE 2/1 SHEET 1 OF 1

