

PVB25 THRU PVB29
VARIABLE DELIVERY IN-LINE PISTON PUMP WITH DUAL RANGE
PRESSURE COMPENSATOR CONTROL (MAXIMUM FLOW ADJUSTABLE STOP)

CONTROL DESCRIPTION
 THE DUAL RANGE PRESSURE COMPENSATOR CONTROL STOP MAX FLOW ADJUSTABLE STOP IS PROVIDED FOR USE WITH VARIABLE DELIVERY IN-LINE PISTON PUMP. THIS CONTROL AUTOMATICALLY ADJUSTS PUMP DELIVERY TO MAINTAIN VOLUME REQUIREMENTS OF THE SYSTEM ALTHOUGH TWO PRESELECTED SETPOINT PRESSURES. MAXIMUM FLOW DELIVERY IS ADJUSTED TO MAINTAIN MAXIMUM DELIVERY IS ADJUSTABLE AND CAN BE SET TO ANY SETPOINT FROM 25% TO 100% FLOW.
 EITHER OF TWO RANGE CONTROL OF THE PUMP SHALL PRESSURE COMPENSATOR IS AVAILABLE IN TWO POSITION. EITHER OF TWO RANGE CONTROL OF THE PUMP SHALL COVER THE TWO PRESSURE RANGE TO BE MAINTAINED IN THE RANGE RANGE.

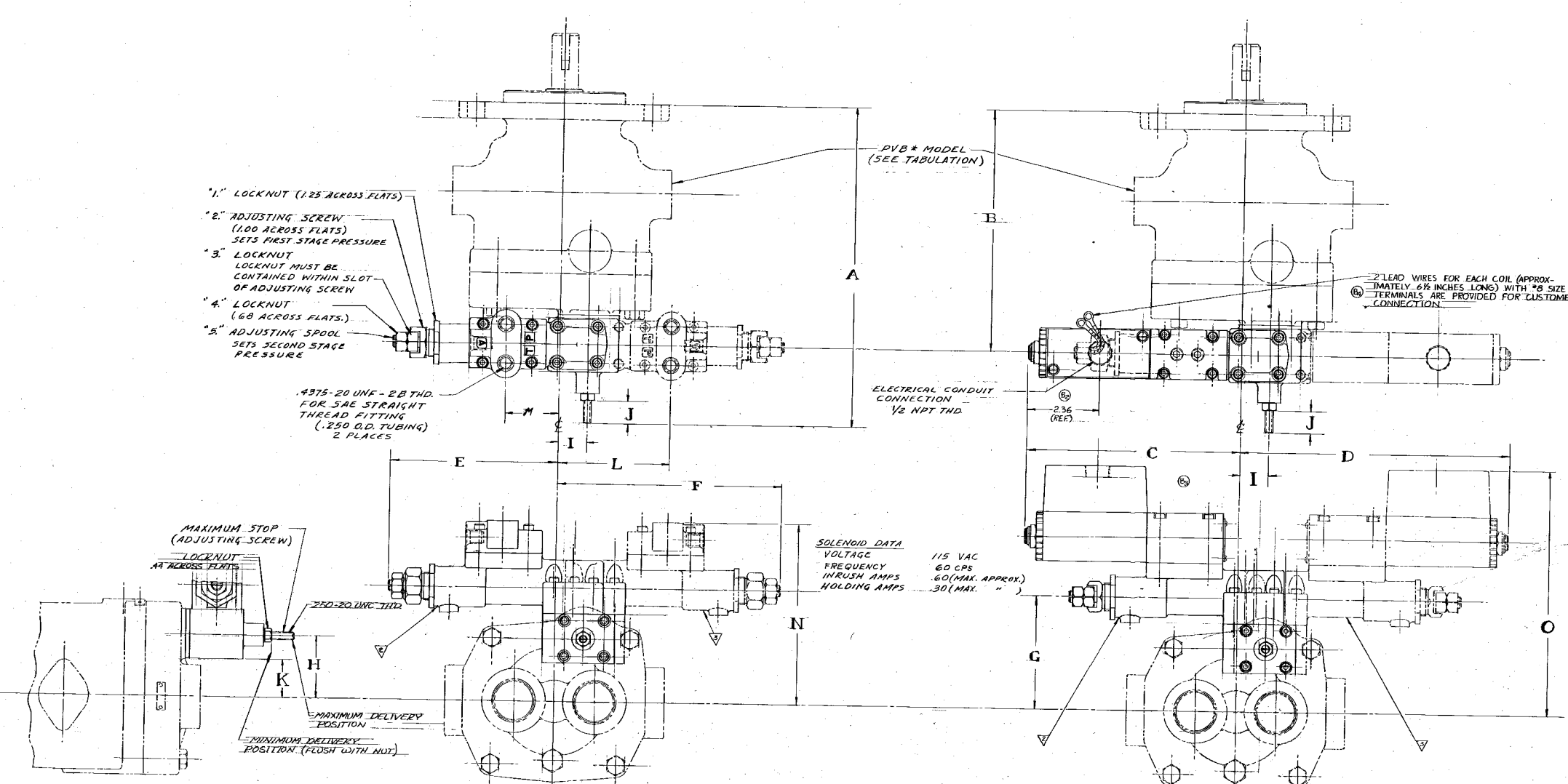
LOWEST RANGE CONTROL ADJUSTMENT (ELECTRICAL - 115 VOLTS 50 CYCLE)
 1. WITH THE SYSTEM PRESSURE IN THE RANGE OF THE RANGE CONTROL "1" AND THE ADJUSTING SCREW "1" TO THE DESIRED FIRST STAGE PRESSURE SETTING AND PROCEED LOCKNUT "1".
 2. WITH THE SYSTEM PRESSURE IN THE RANGE OF THE RANGE CONTROL "1" AND THE ADJUSTING SCREW "1" TO THE DESIRED FIRST STAGE PRESSURE SETTING AND PROCEED LOCKNUT "1".
 3. WITH THE SYSTEM PRESSURE IN THE RANGE OF THE RANGE CONTROL "1" AND THE ADJUSTING SCREW "1" TO THE DESIRED FIRST STAGE PRESSURE SETTING AND PROCEED LOCKNUT "1".

HIGHER RANGE CONTROL ADJUSTMENT (ELECTRICAL - 115 VOLTS 50 CYCLE)
 4. WITH THE SYSTEM PRESSURE IN THE RANGE OF THE RANGE CONTROL "2" AND THE ADJUSTING SCREW "2" TO THE DESIRED SECOND STAGE PRESSURE SETTING AND PROCEED LOCKNUT "2".
 5. WITH THE SYSTEM PRESSURE IN THE RANGE OF THE RANGE CONTROL "2" AND THE ADJUSTING SCREW "2" TO THE DESIRED SECOND STAGE PRESSURE SETTING AND PROCEED LOCKNUT "2".
 6. WITH THE SYSTEM PRESSURE IN THE RANGE OF THE RANGE CONTROL "2" AND THE ADJUSTING SCREW "2" TO THE DESIRED SECOND STAGE PRESSURE SETTING AND PROCEED LOCKNUT "2".

MAXIMUM FLOW ADJUSTMENT
 WITH THE SYSTEM PRESSURE IN THE RANGE OF THE RANGE CONTROL "1" AND THE ADJUSTING SCREW "1" TO THE DESIRED FIRST STAGE PRESSURE SETTING AND PROCEED LOCKNUT "1".
 WITH THE SYSTEM PRESSURE IN THE RANGE OF THE RANGE CONTROL "2" AND THE ADJUSTING SCREW "2" TO THE DESIRED SECOND STAGE PRESSURE SETTING AND PROCEED LOCKNUT "2".

NOTE: THE ADJ. MAX STOP CONTROL IS NOT AVAILABLE ON THE PVB2028 THRU SHAFT UNITS.

REV	DATE	BY	CHKD	DESCRIPTION
1				INITIAL ISSUE
2				REVISION
3				REVISION
4				REVISION
5				REVISION
6				REVISION
7				REVISION
8				REVISION
9				REVISION
10				REVISION



HYDRAULIC DUAL-RANGE PRESSURE COMPENSATOR AND MAXIMUM STOP CONTROL

ELECTRIC DUAL-RANGE PRESSURE COMPENSATOR AND MAXIMUM STOP CONTROL

SOLENOID DATA
 VOLTAGE 115 VAC
 FREQUENCY 60 CPS
 INRUSH AMPS 60(MAX. APPROX.)
 HOLDING AMPS 30(MIN. -)

SEE DRAWINGS D-347508 (REV D-342778) AND C-354582 FOR ASSEMBLY INFORMATION ON THE -10 DESIGN COMP SEE DRAWINGS D-37878 (REV D-37879)

SEE DRAWINGS INDICATED FOR ADDITIONAL INSTALLATION AND OPERATIONAL DATA.

MODEL	A	B	C	D	E	F	G	H	I	J	K	L	M	N	O	①
PVB 516	9.7	6.7	7.93	7.95	6.63	6.63	3.00	1.97	.80	.62	.70	2.69	2.69	5.78	8.01	②
PVB 1015	10.46	7.94	6.49	6.77	6.03	2.57	3.60	2.06	.94	.68	.79	3.63	1.75	5.08	8.16	③
PVB 2015	11.68	9.06	6.82	—	5.00	—	4.24	2.68	1.62	.77	1.65	—	1.06	6.40	8.72	④

① -10 DESIGN COMP CONTROL
 ② -11 DESIGN COMP CONTROL
 ③ -12 DESIGN COMP CONTROL
 ④ -13 DESIGN COMP CONTROL