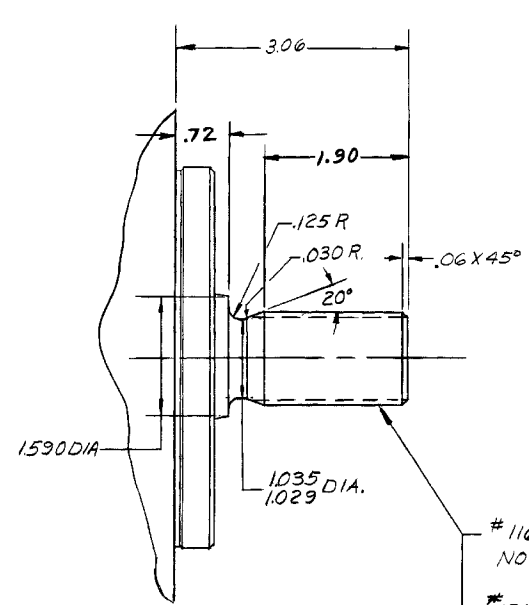
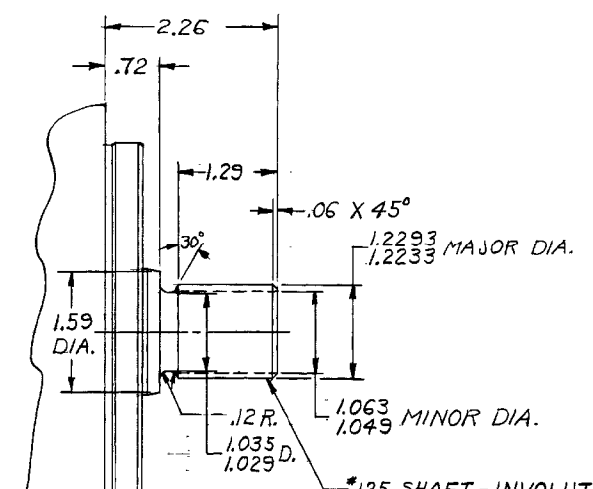
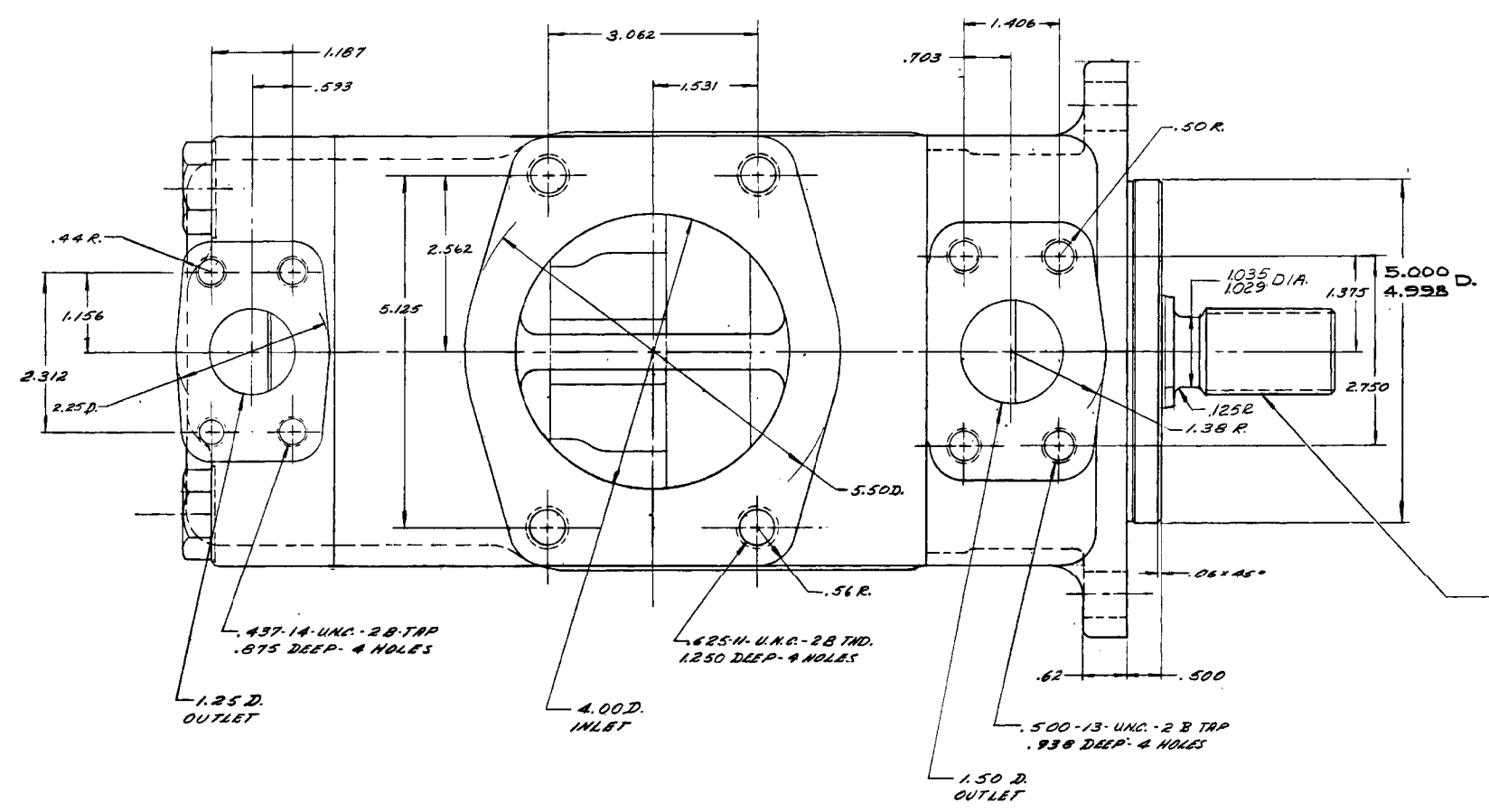


REV	DATE	DESCRIPTION	APPROVED
2-D	2-2-75	ADDED SHAFT #125	BC
3A	3-4-75	ADDED NOTE	BC
3C	3-4-75	ADDED #126 SHAFT NOTE	BC
3A	3-4-75	NOTE REMOVED	BC
4A	9-9-75	ADDED SHAFT #136	BC
4B	11-8-76	2.19 WAS 2.88	BC
4B	2-3-77	1.26 WAS 1.95	BC

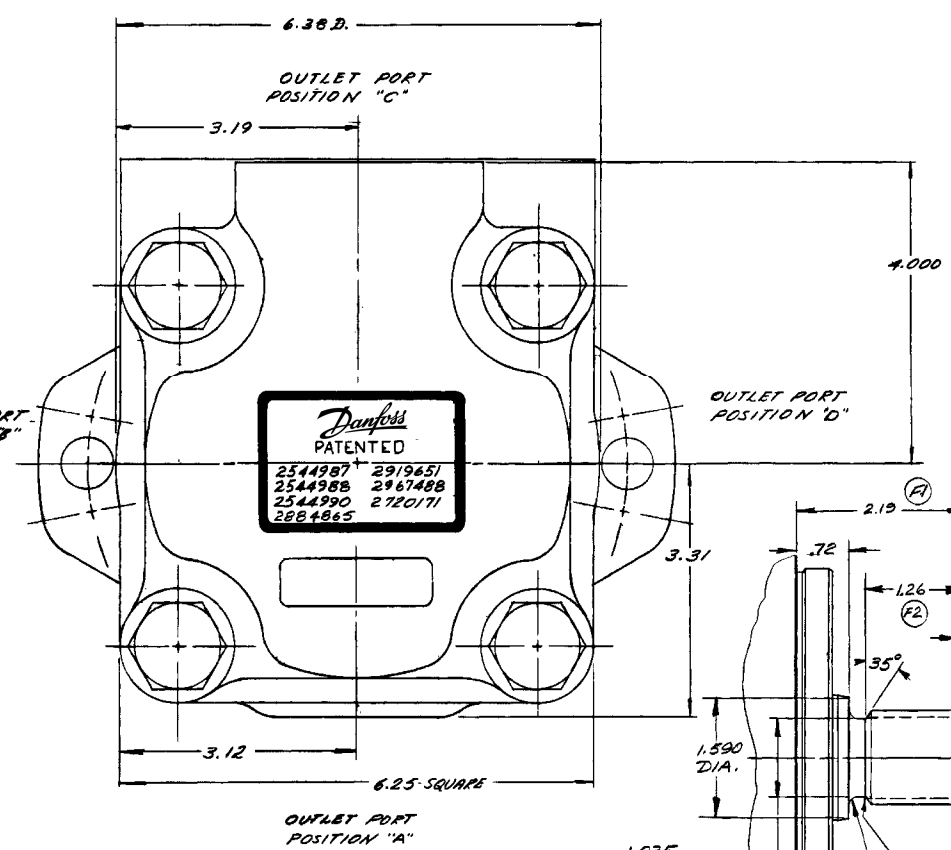


#116 SHAFT INVOLUTE SPLINE
NOTE: SPLINE DATA SAME AS #114 SHAFT
#126 SHAFT SAME DIMENSIONS BUT DIFFERENT MAT'L.



#125 SHAFT-INVOLUTE SPLINE
(SIDE TOOTH FIT)
12/24 DIAMETRAL PITCH
14 TEETH - 30° PRESSURE ANGLE
1.1667 PITCH DIA.
1.0104 BASE CIRCLE DIA.
1.0822 T.I.F. DIA. MAX.
1.286 MAX. EFFECTIVE TOOTH WIDTH
1.4046/1.4028 MEASUREMENT OVER
.1600 DIA. PINS
.009 R. MAX. AT MINOR DIA.
.1248 MIN. ACTUAL TOOTH WIDTH

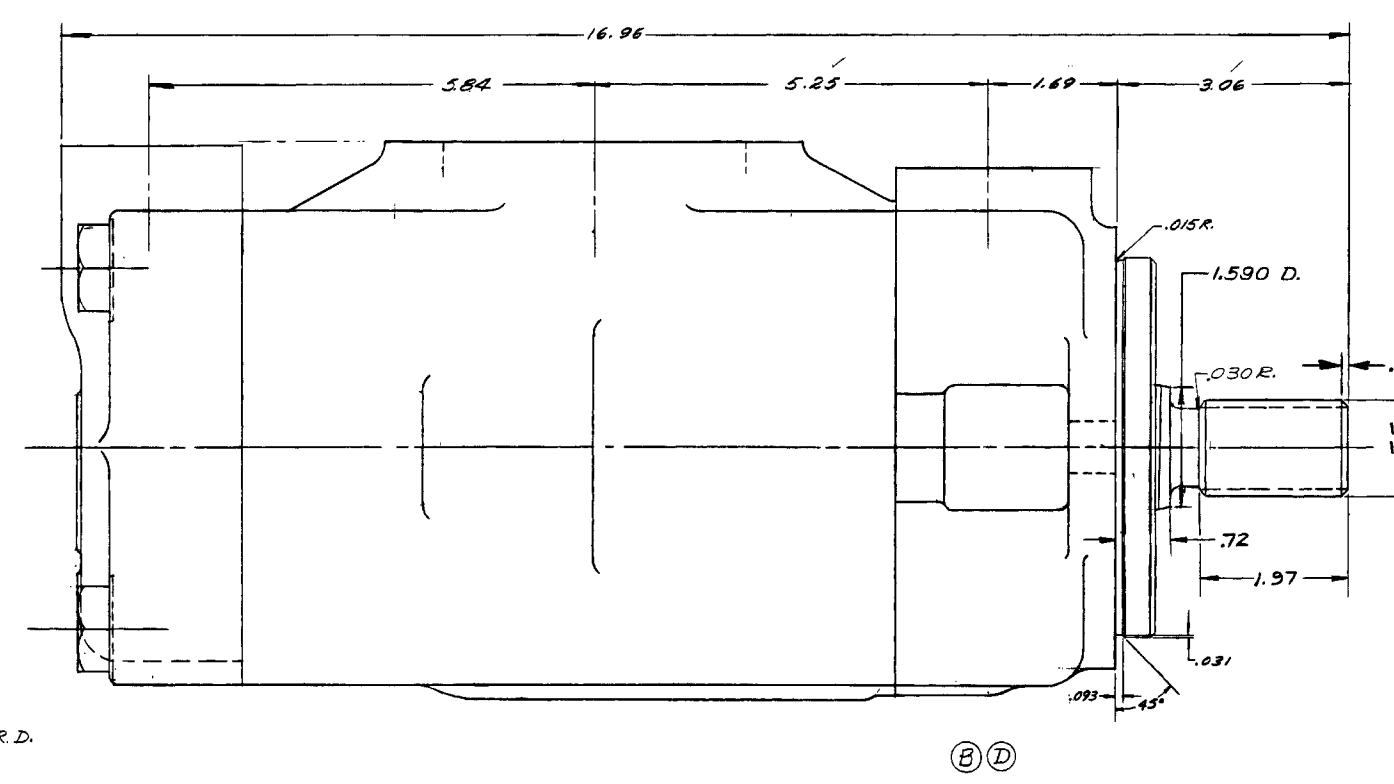
#114 SHAFT-INVOLUTE SPLINE
12/24 D.P. - FLAT ROOT
14 TEETH - 30° PRESSURE ANGLE
1.0822 T.I.F. DIA.
1.4046/1.4028 O.D. OVER .1600 D. PINS
1.063/1.049 - MINOR DIA.
1.286 MIN. ACTUAL TOOTH WIDTH
1.286 MAX. EFFECTIVE TOOTH WIDTH
1.1667 PITCH DIA.
1.0104 BASE CIRCLE DIA.



OUTLET PORTS MAY BE ASSEMBLED IN ANY ONE OF FOUR POSITIONS WITH RESPECT TO INLET CONNECTION AND INDICATED IN MODEL NUMBER EXAMPLES: 4535V111111-111111

RING CAPACITY @ 1000 RPM - 100 PSI	COVER END	SHAFT END
25 GPM	42 GPM	
30 GPM	47 GPM	
35 GPM	50 GPM	
38 GPM	57 GPM	
	60 GPM	

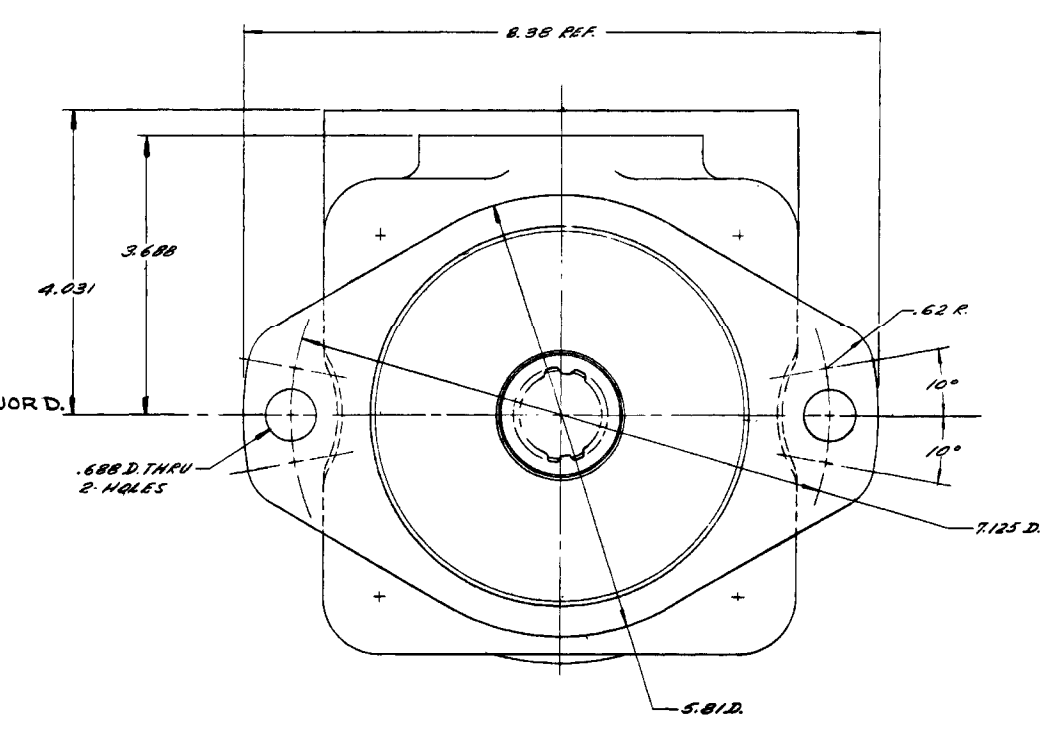
#136 SHAFT-INVOLUTE SPLINE
1 1/4" D.P. - FLAT ROOT - 14 TEETH
30° PRESSURE ANGLE
1.0822 T.I.F. DIAMETER
1.4046/1.4028 OVER .1600 DIA. PINS
1.063/1.049 MINOR DIA.
1.286 MAX. EFFECTIVE TOOTH WIDTH
1.286 MIN. ACTUAL TOOTH WIDTH
1.1667 PITCH DIA.
1.0104 BASE CIRCLE DIA.



5. MAXIMUM RECOMMENDED SPEED:
ALL RINGS --- 2200 RPM

MAXIMUM RECOMMENDED PRESSURE:
SHAFT END PUMP ALL RINGS --- 2500 PSI
COVER END PUMP ALL RINGS --- 3000 PSI

4. PUMP DRIVE - PUMP IS RECOMMENDED FOR DIRECT COAXIAL DRIVE. IF DRIVES IMPOSING RADIAL SHAFT LOADS ARE CONSIDERED, CONSULT THE DANFOSS SALES REPRESENTATIVE.



3. PUMP IS ASSEMBLED FOR RIGHT HAND ROTATION FOR LEFT HAND POSITION ADD SUFFIX "L" TO MODEL NUMBER. EXAMPLE 4535V111111-L
2. FOR THIS HIGH PERFORMANCE PRODUCT TO QUALIFY UNDER DANFOSS WARRANTY IT IS TO BE USED ONLY IN CIRCUITS THAT ARE INITIALLY AND CONTINUOUSLY FILTERED TO 25 MICRONS OR LESS.

1. FLUID RECOMMENDATION:
SEE REFERENCE DATA SHEET M-2950-S
G.T. CODE NO. - N/A

UNLESS OTHERWISE SPECIFIED INTERIORS PER V5 13-5-1 SURFACE ROUGHNESS 3.2 um (125 μin) TOLERANCES ON DECIMALS INCH ± .015 ± .025 ± .030 ± .040 MILLIMETER ± .025 ± .030 ± .040 ± .050	THIRD ANGLE PROJECTION FIRST ANGLE PROJECTION MATERIAL HEAT TREATMENT REMOVE BURRS BREAK EDGES 0.25mm (0.010") MAX DUAL DIMENSION POSITIONS SCALE 1/1	MODEL 4535V-10-211 # 4535VQ SERIES REV 241435 DATE 10/10/73 DESIGNER J. J. J. J. J. CHECKED J. J. J. J. J. DATE 6 JULY 73 TITLE INSTALLATION DOUBLE VANE PUMP SIZE CODE IDENT NO. DRAWING NO. 413037 SCALE 1/1	RECEIVED ENG. ROOM JUN 11 1973
---	--	---	--------------------------------

413037

413037 Rev F