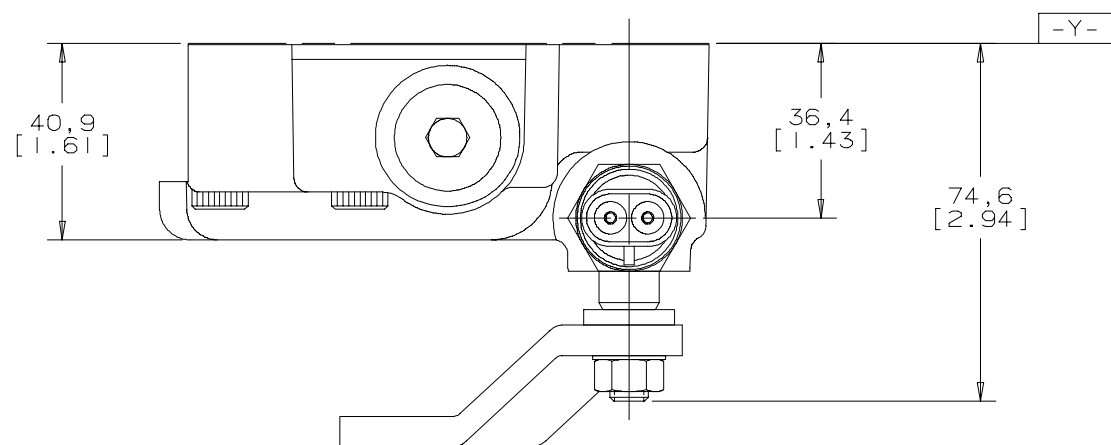


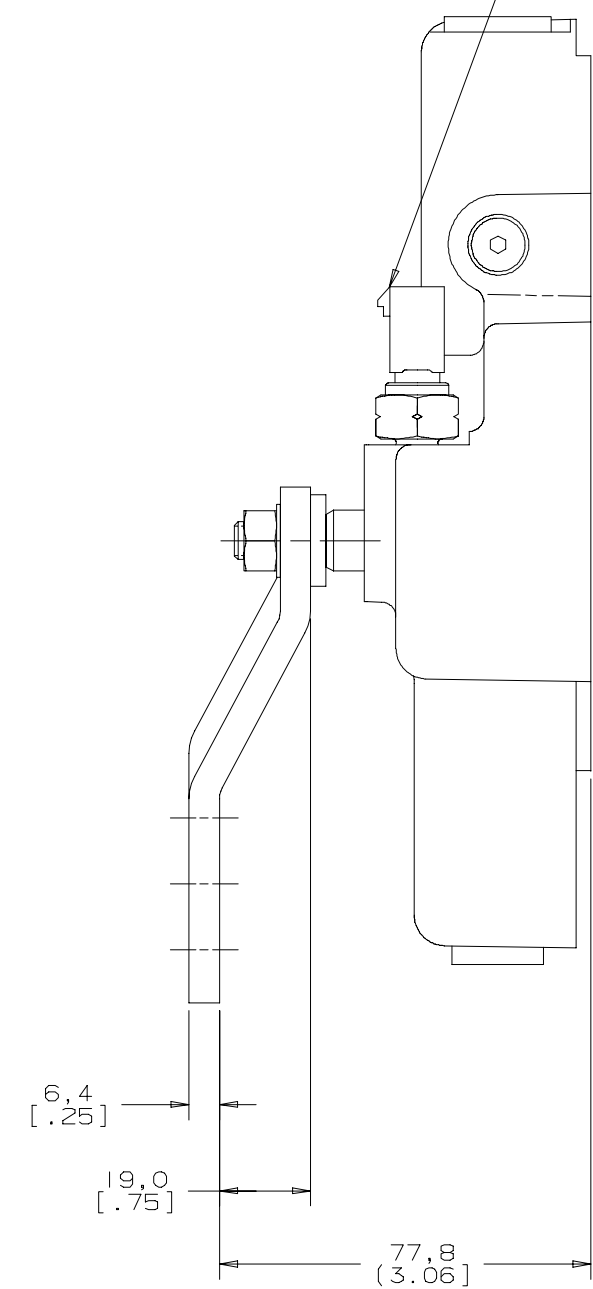
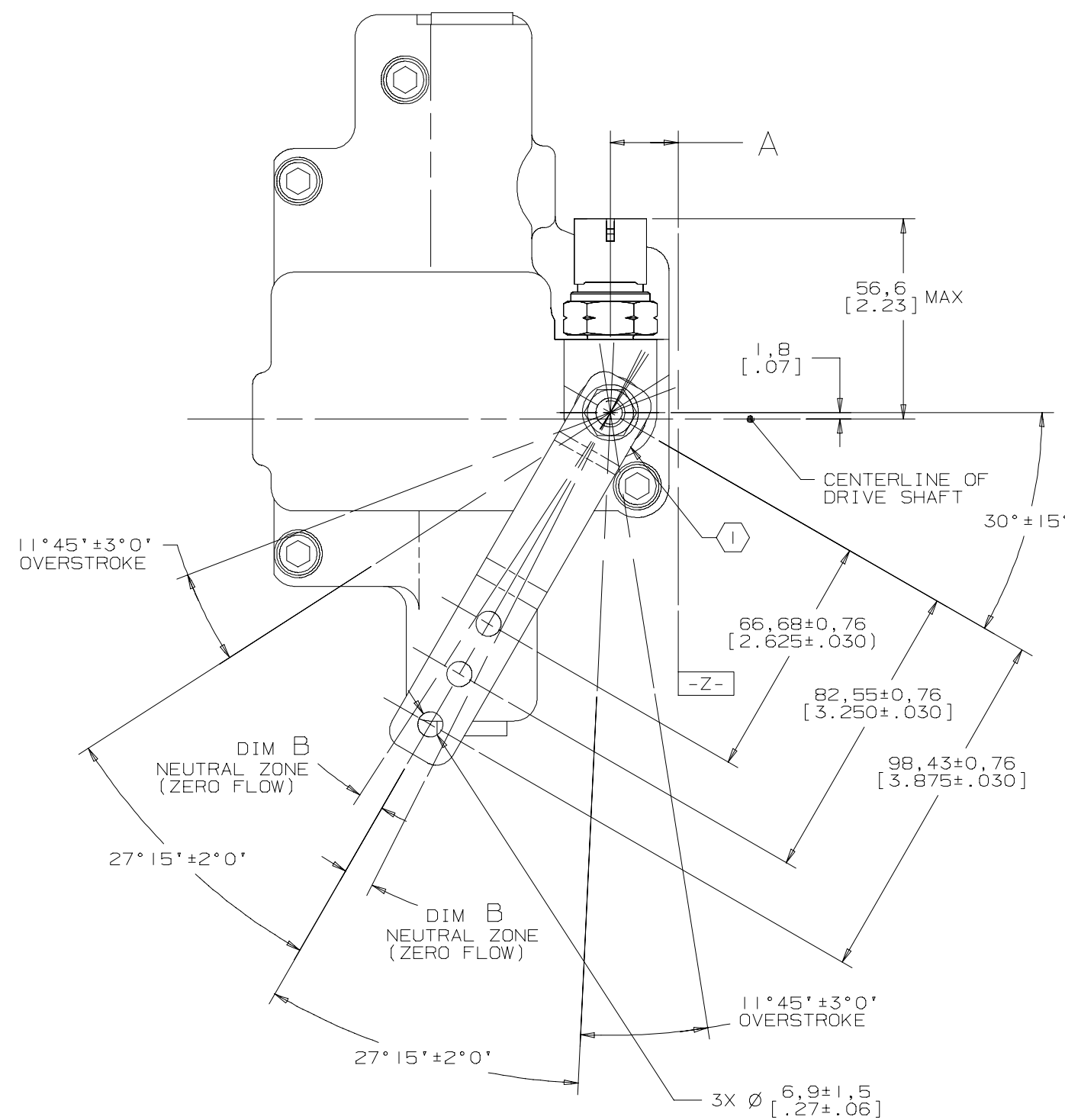
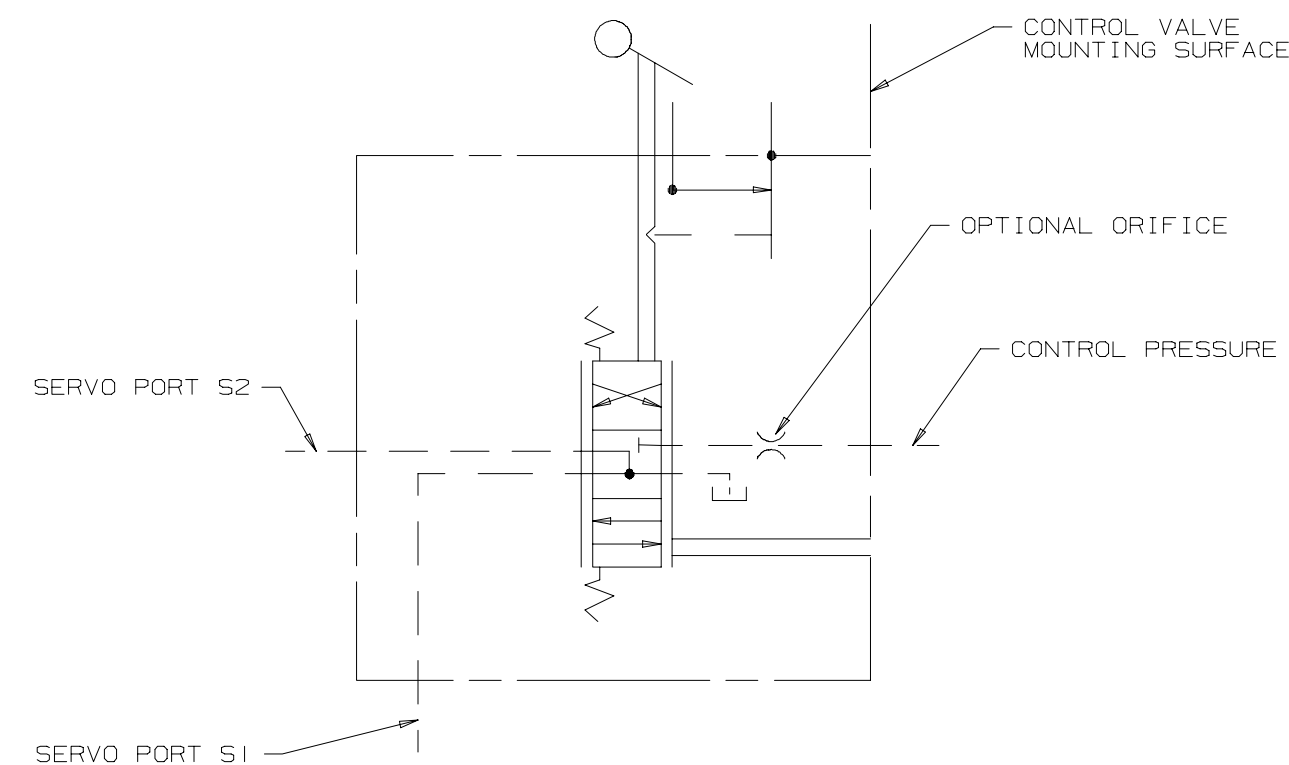
DISPLACEMENT	DIM A
54,34 cm ³ /r [3.316 in ³ /r]	18,5 [.73]
63,66 cm ³ /r [3.885 in ³ /r]	18,5 [.73]
75,28 cm ³ /r [4.594 in ³ /r]	18,5 [.73]
89,13 cm ³ /r [5.439 in ³ /r]	107,3 [1.17]
105,4 cm ³ /r [6.431 in ³ /r]	107,3 [1.17]

CONTROL SPOOL	DIM B
NARROW BAND	2° 30' ±1° 45'
WIDE BAND	4° 15' ±1° 45'

REV	DESCRIPTION	BY	CHK	DATE	ECN
A	ENGINEERING RELEASE	RLL	JED	9-25-00	M24249
B	REVISED PICTORIALY	BMS	BCH	11-29-01	39424



CONTACT RATINGS:
 OPTIONAL NORMALLY CLOSED AT NEUTRAL
 100,000 ELECTRICAL CYCLES AT:
 14 VDC, 4.4 AMPS LAMP LOAD
 14 VDC, 2.0 AMPS INDUCTIVE LOAD, OR
 14 VDC, 4.4 AMPS RESISTIVE LOAD
 500,000 MECHANICAL CYCLES
 OPTIONAL NORMALLY OPEN AT NEUTRAL
 100,000 CYCLES AT 14 VDC, 4.2 AMPS,
 LAMP LOAD
 CONNECTOR PINS DESIGNED TO MATE WITH DELPHI PACKARD
 CONNECTOR P/N 1201 5792 (1)
 TERMINAL P/N 1208 9040 (2)
 CABLE SEAL P/N 1201 5323 (2)



NOTE
 (1) RADIAL POSITION OF CONTROL HANDLE TO SHAFT IS OPTIONAL AT 15° INCREMENTS
 1.1 N·m [10 lbf·in] TORQUE IS REQUIRED FOR FULL CONTROL HANDLE TRAVEL. TOTAL APPLIED TORQUE NOT TO EXCEED 16.9 N·m [150 lbf·in].

INPUT SHAFT ROTATION	CW		CCW	
HANDLE ROTATION	"A" (CCW)	"B" (CW)	"A" (CCW)	"B" (CW)
PORT A FLOW	OUT	IN	IN	OUT
PORT B FLOW	IN	OUT	OUT	IN

UNLESS OTHERWISE SPECIFIED ALL DIMENSIONS ARE IN INCHES <input type="checkbox"/> MILLIMETERS <input checked="" type="checkbox"/> TOLERANCES .x ---- .xx ---- .xxx ---- < ----	DRAWING BASED ON ANSI Y14.5M-1982			
	DRWN BY/DATE RLL 9-28-00	MATERIAL/HEAT TREAT		
	CHKD BY/DATE JED 10-4-00	TITLE		
	ENGR BY/DATE JKK 10-4-00	MANUAL CONTROL INSTALLATION WITH NEUTRAL LOCK-OUT		
UNSPECIFIED DRAFT ANGLES ARE	THIRD ANGLE PROJECTION	MICROINCHES (MICROINCHES) <input type="checkbox"/>	NUMBER	
DRAWING FORMAT CODE <input checked="" type="checkbox"/> MANUAL <input type="checkbox"/>	DO NOT SCALE	ARITHMETICAL AVERAGE	A-994-029	
		SCALE 1/1	SHEET 1 OF 1	