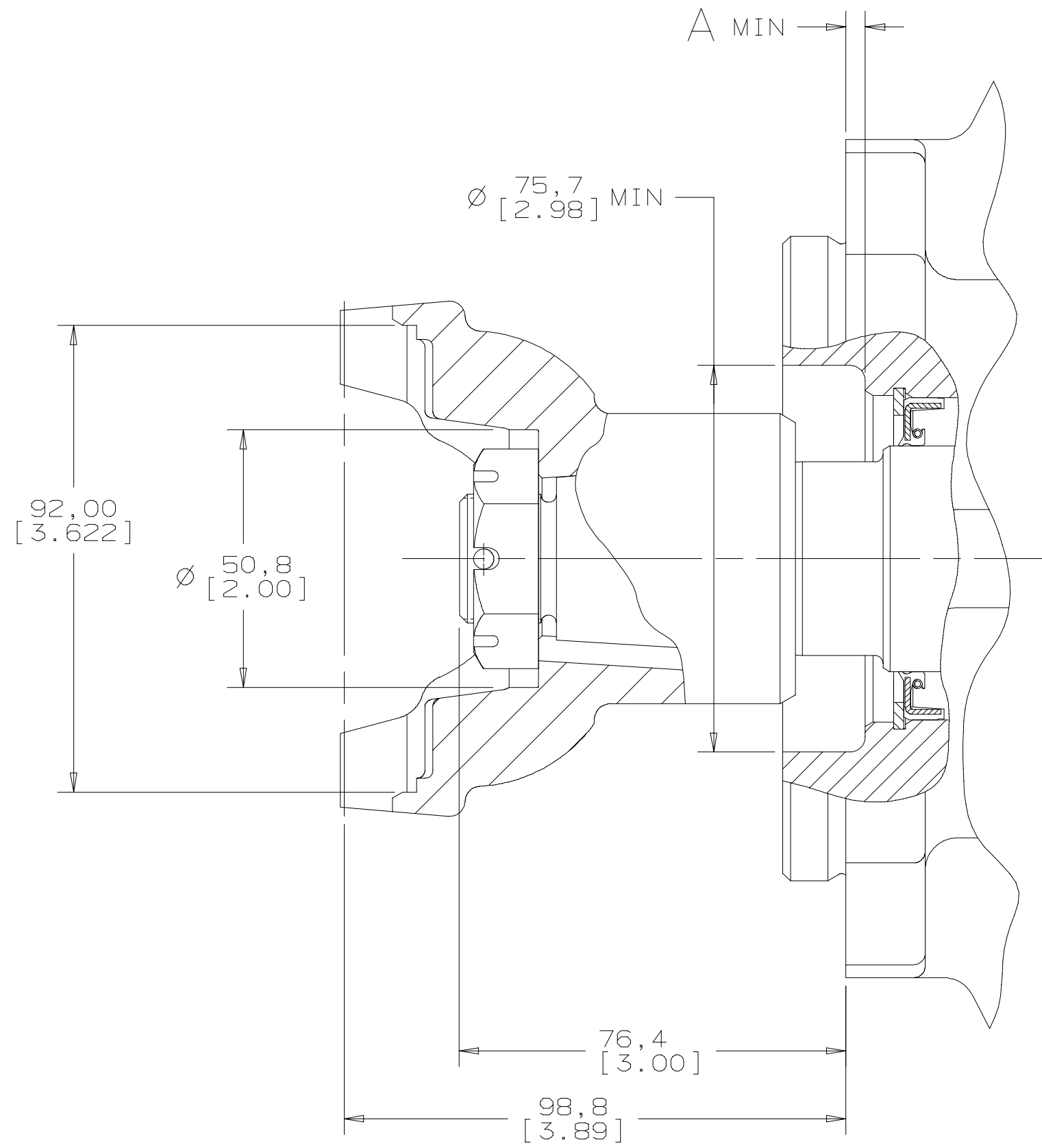
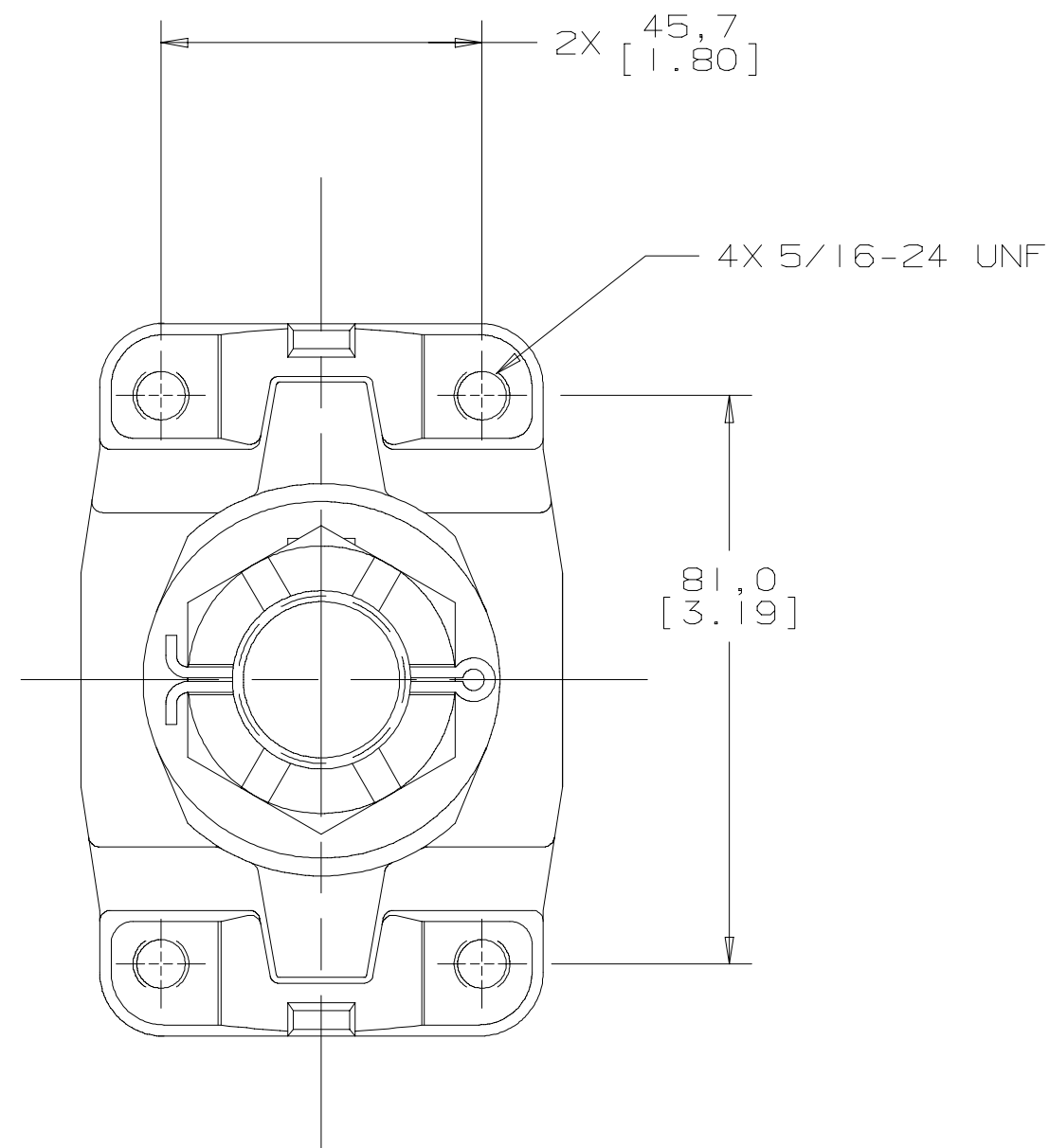



A MIN	UNIT SIZE
7,4 [.29]	33-39-46
3,3 [.13]	54-64

REV	DESCRIPTION	BY	CHK	DATE	ECN
A	ENGINEERING RELEASE	RLL	JED	4-3-01	37645



NOTE  
I FOR SERIES 1350 YOKE

UNLESS OTHERWISE SPECIFIED ALL DIMENSIONS ARE IN INCHES <input type="checkbox"/> MILLIMETERS <input checked="" type="checkbox"/> <b>TOLERANCES</b> .X ± --- .XX ± --- .XXX ± --- < ± --- UNSPECIFIED RADII ARE --- UNSPECIFIED DRAFT ANGLES ARE --- DRAWING FORMAT CADD <input checked="" type="checkbox"/> MANUAL <input type="checkbox"/>	DRAWING BASED ON ANSI Y14.5M-1982	
	NOTICE TO PERSONS RECEIVING THIS DRAWING AND / OR TECHNICAL INFORMATION Eaton Corporation claims proprietary rights in the information disclosed hereon. This document is issued in confidence and is not to be reproduced or used to manufacture anything shown hereon without the written permission of the Eaton Corporation.	
DRAWN BY/DATE RLL 4-4-01 CHECKED BY/DATE JED 5-11-01 ENGRG BY/DATE JWR 5-15-01 METALLURGY --- BY/DATE	MATERIAL/HEAT TREAT TITLE INSTALLATION, SHAFT 1 1/2 TAPER	
THIRD ANGLE PROJECTION DO NOT SCALE	MICROINCHES <input type="checkbox"/> MICROMETERS [MICROINCHES] <input type="checkbox"/> ARITHMETICAL AVERAGE <input checked="" type="checkbox"/>	NUMBER A-1362-032 SCALE 1/1 SHEET 1 OF 1