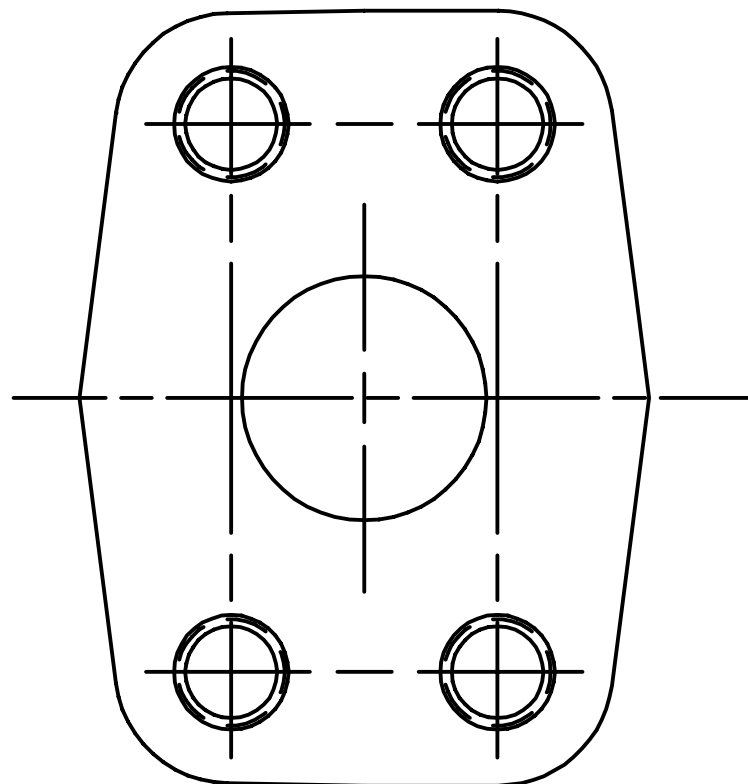



REV	DESCRIPTION	BY	CHK	DATE	ECN
A	ENGINEERING RELEASE	MLL	JGS	3-17-99	32506



1.00 SAE 4-BOLT SPLIT FLANGE PORT
HIGH PRESSURE SERIES (CODE 62)

T

UNLESS OTHERWISE SPECIFIED ALL DIMENSIONS ARE IN INCHES <input type="checkbox"/> MILLIMETERS [INCHES] <input checked="" type="checkbox"/>	DRAWING BASED ON ANSI Y14.5M-1982	
	NOTICE TO PERSONS RECEIVING THIS DRAWING AND / OR TECHNICAL INFORMATION Eaton Corporation claims proprietary rights in the information disclosed hereon. This document is issued in confidence and is not to be reproduced or used to manufacture anything shown hereon without the written permission of the Eaton Corporation.	
TOLERANCES .X ±--- .XX ±--- .XXX ±--- < ±---	DRAWN BY/DATE MLL 2-22-99 CHECKED BY/DATE JGS 4-14-99 ENGRG BY/DATE GRK 4-15-99 METALLURGY BY/DATE ---	MATERIAL/HEAT TREAT TITLE HIGH PRESSURE PORT INSTALLATION
UNSPECIFIED RADII ARE ---	MICROINCHES <input type="checkbox"/> MICROMETERS [MICROINCHES] <input type="checkbox"/> ARITHMETICAL AVERAGE <input checked="" type="checkbox"/>	NUMBER A-1363-002
UNSPECIFIED DRAFT ANGLES ARE ---	 THIRD ANGLE PROJECTION	SCALE 1/1 SHEET 1 OF 1
DRAWING FORMAT CADD <input checked="" type="checkbox"/> MANUAL <input type="checkbox"/>	DO NOT SCALE	

