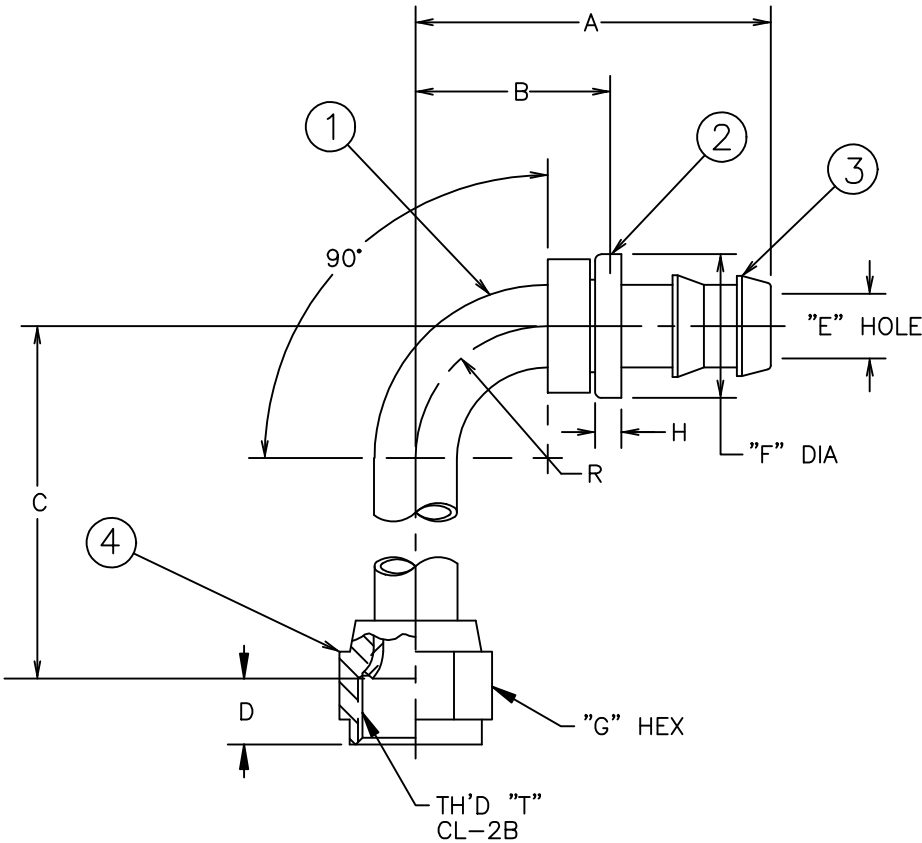


PART NUMBER	TH'D "T"	A ±.062	B REF	C ±.062	D REF	E REF	F ±.010	G REF	H REF	R REF
FC5852-0404S	7/16-20	1.454	.70	1.800	.40	.15	.615	.56	.16	.38

REVISIONS			
REV.	DESCRIPTION	DATE	APPROVED
D	REDRAWN ON CAD - LAST REV. "C" (1) .15 WAS .17 (2) NOTE #1(b) WAS: "CADMIUM PLATE PER ACES 16P6"	3-20-92	EN-F12791 ER-F12791
E	(1) ADDED NOTE #3	9-22-92 P.T.R.	EN-F13373 DAI-23967

Ⓐ



⚠ CAN BE MADE FROM TUBING PER SPECIFICATIONS ON ELBOW DRAWING. Ⓐ

2. FOR OTHER SIZES IN SAE 37, SEE 190465-S.

1. PROCESS AS FOLLOWS: Ⓐ
- (a) BRAZE PER ACES 67P3 OR P26.
 - (b) ZINC PLATE PER ACES 16P47.
 - (c) ASSEMBLE NUT AND FLARE PER FF481.
 - (d) ASSEMBLE CAP.

THE REPRODUCTION, DISTRIBUTION AND UTILIZATION OF THIS DOCUMENT AS WELL AS THE COMMUNICATION OF ITS CONTENTS TO OTHER WITHOUT EXPLICIT AUTHORIZATION IS PROHIBITED. OFFENDERS WILL BE HELD LIABLE FOR THE PAYMENT OF DAMAGES. ALL RIGHT RESERVED IN THE EVENT OF THE GRANT OF A PATENT, UTILITY MODEL OR DESIGN. (PER ISO 16016)

FC5852-0404S	409008-4S	4213-1-4B	4131-4S	210221-4S	
PART NUMBER	Ⓐ ELBOW ⚠	Ⓐ HOSE CAP	Ⓐ NIPPLE	Ⓐ NUT	
LIST OF MATERIALS					
ITEM NO.	MATERIAL	DRAWN TERRY BAKER	DATE 3-20-92	FLUID CONVEYANCE DIVISION	
1	STEEL	CHECKED R.D.GARRETT	DATE 3-25-92		
2	BRASS	APPROVED R.D.GARRETT	DATE 3-25-92	DRAWING TITLE FITTING ASSEMBLY 90°, UNIVERSAL (SAE 37° OR SAE 45°) SWIVEL, 2556 HOSE	
3	STEEL	RELEASED EN-F12791	DATE 3-25-92		
4	STEEL	PROJECT NO. ER-F12791	APC NO.	SIZE C	(CAGE) CODE NO. 01276
		DESIGN APPROVED		DRAWING NUMBER FC5852-S	
		APPROVED		U	SHEET