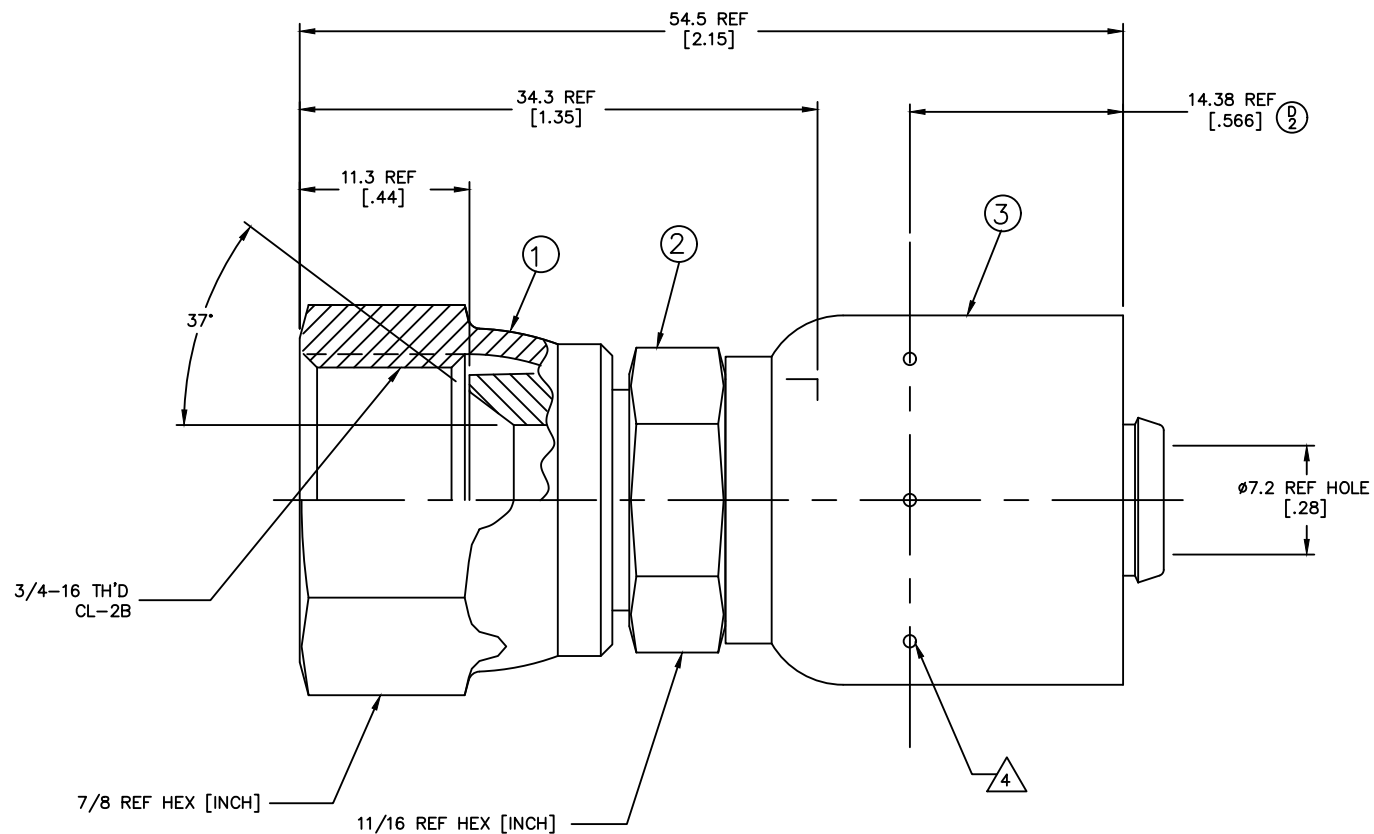


REVISIONS			
REV	DESCRIPTION	DATE	APPROVED
C	REACTIVATED AS PER REV "A" TO SHOW AEROQUIP DESIGN	2006-05-12 RHJ/KBM	EN-F30034 DP-1299
D	ADDED MARKING FOR CRIMPING LOCATION. UPDATED DRAWING ACCORDINGLY. 1) ADDED NOTE #4 2) ADDED DIMENSION.	2021-11-16 DMK/ARK	CO-0221245



METRIC

FJ3114-0808S	210204-8S	FW1231-0808S	FW1186-08S	
PART NUMBER	① NUT	② NIPPLE	③ SOCKET	

LIST OF MATERIALS

ITEM NO.	MATERIAL	DRAWN LoTanya Wraags
1	STEEL	CHECKED R. D. WEBB
2	STEEL	APPROVED R.D.GARRETT
3	STEEL	RELEASE DATE 2000-05-23
		EN-F19882
		DP-1290
		THIRD ANGLE PROJECTION

Danfoss FLUID CONVEYANCE DIVISION

DRAWING TITLE
FITTING ASSEMBLY
SAE 37° SWIVEL, 1503 HOSE

SIZE A2	DRAWING NUMBER FJ3114-0808S	REV D
SCALE 4/1	DIST U	CAGE CODE 01276
		SHEET 1

THE REPRODUCTION, DISTRIBUTION AND UTILIZATION OF THIS DOCUMENT AS WELL AS THE COMMUNICATION OF ITS CONTENTS TO OTHERS WITHOUT EXPLICIT AUTHORIZATION IS PROHIBITED. OFFENDERS WILL BE HELD LIABLE FOR THE PAYMENT OF DAMAGES. ALL RIGHT RESERVED IN THE EVENT OF THE GRANT OF A PATENT, UTILITY MODEL OR DESIGN. (PER ISO 16016)

④ CRIMP LOCATION IMPRESSION MARK (6-8 PLACES). ①

3. DIMENSIONS ARE IN MILLIMETERS [INCHES].

2. THERE SHOULD BE NO SOCKET MOVEMENT ON THE NIPPLE AFTER CRIMPING.

1. PROCESS AS FOLLOWS:

(a) CRIMP NUT PER ACES 2813.

(b) CRIMP SOCKET PER ES 2409P17.